

SHOP DRAWING NAME

TYPICAL - SL  
PROJECT

GENERAL CONTRACTOR

EQUIPMENT SUPPLIED BY:

SPECIFICATIONS

SL-54  
2 LANDING

Spectra-Lift

CAR 36"Dx51"Wx42"H CODE(S) 4,5  
CAPACITY 750 LBS. AT 18 F.P.M.  
DRIVING MEANS: 1/2 CHAIN HYDRAULIC  
SUSPENSION MEANS: TWO (2) 5/8" PITCH  
LEAF CHAINS, 7500# TENSILE STRENGTH  
COLOR- WHEAT  
LOCATION- OUTSIDE

24 VDC HYDRAULIC POWER UNIT  
120 VAC BATTERY CHARGER  
☑ ALL DOORS MUST BE INTERLOCKED  
☑ KEYSWITCH OPERATION  
☐ STATIONARY RAMP  
☑ LANDING GATE w/ INTERLOCK  
☑ PLATFORM GATE WITH INTERLOCK  
☑ EMERGENCY ALARM  
☑ EMERGENCY STOP  
☑ MANUAL LOWERING  
☑ PLATFORM SAFETY MECHANISM  
☑ INSTANT REVERSE  
☑ LIMIT SWITCHES  
☑ ENCLOSURE DOORS BY INCOA  
☑ ENCLOSURE BY INCOA

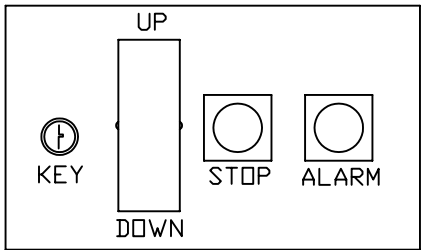
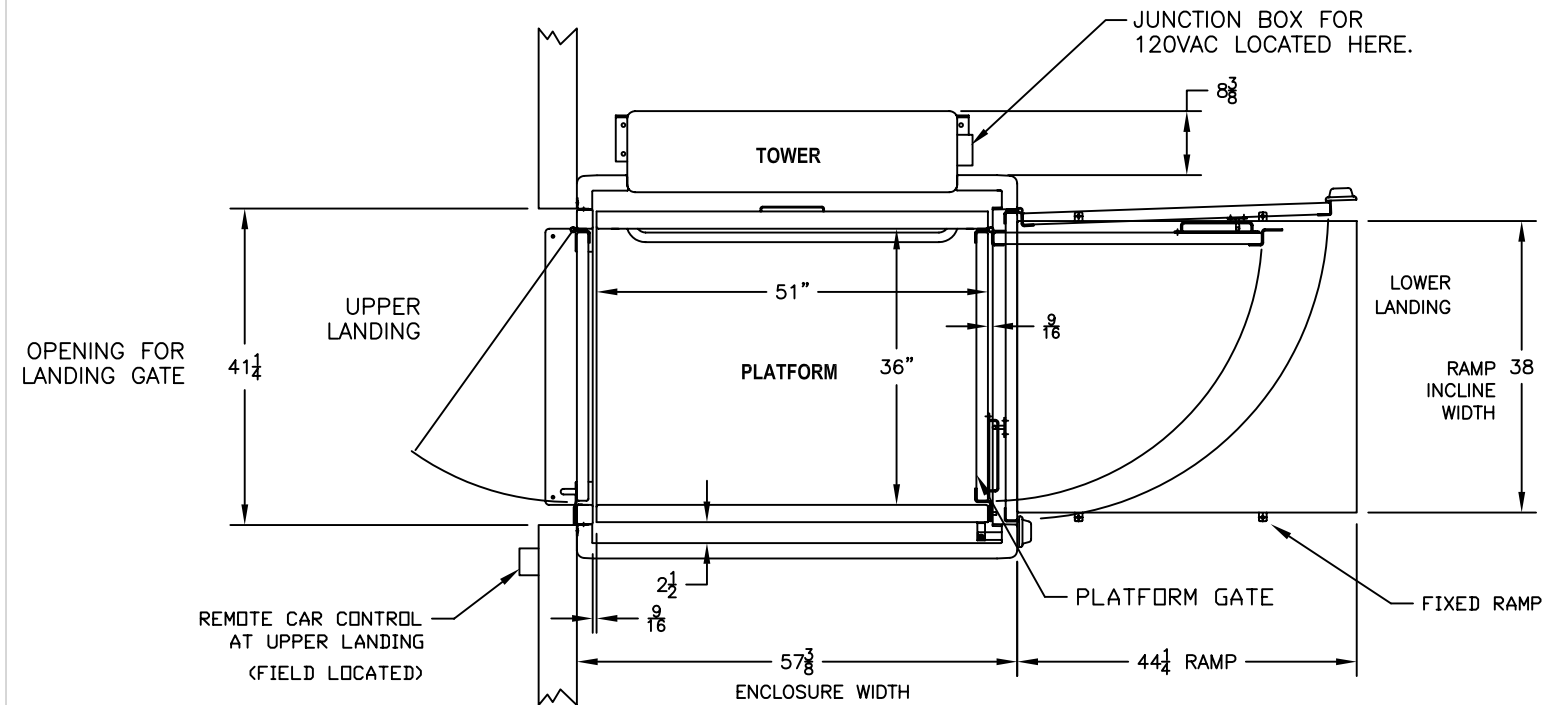
NOTICE TO ELECTRICAL CONTRACTOR:  
INSTALL 120V. SINGLE PHASE  
DISCONNECT SWITCH

120 VAC SINGLE PHASE  
50/60 HZ  
15 AMP MAIN LINE FUSE

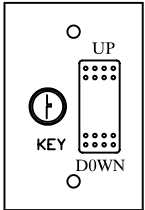
INCOA JOB # -  
DEALER P.O. # -  
DRAWING BY: J.PETTYJOHN  
DATE: 02/25/2008

DRAWING IDENTIFICATION NUMBER

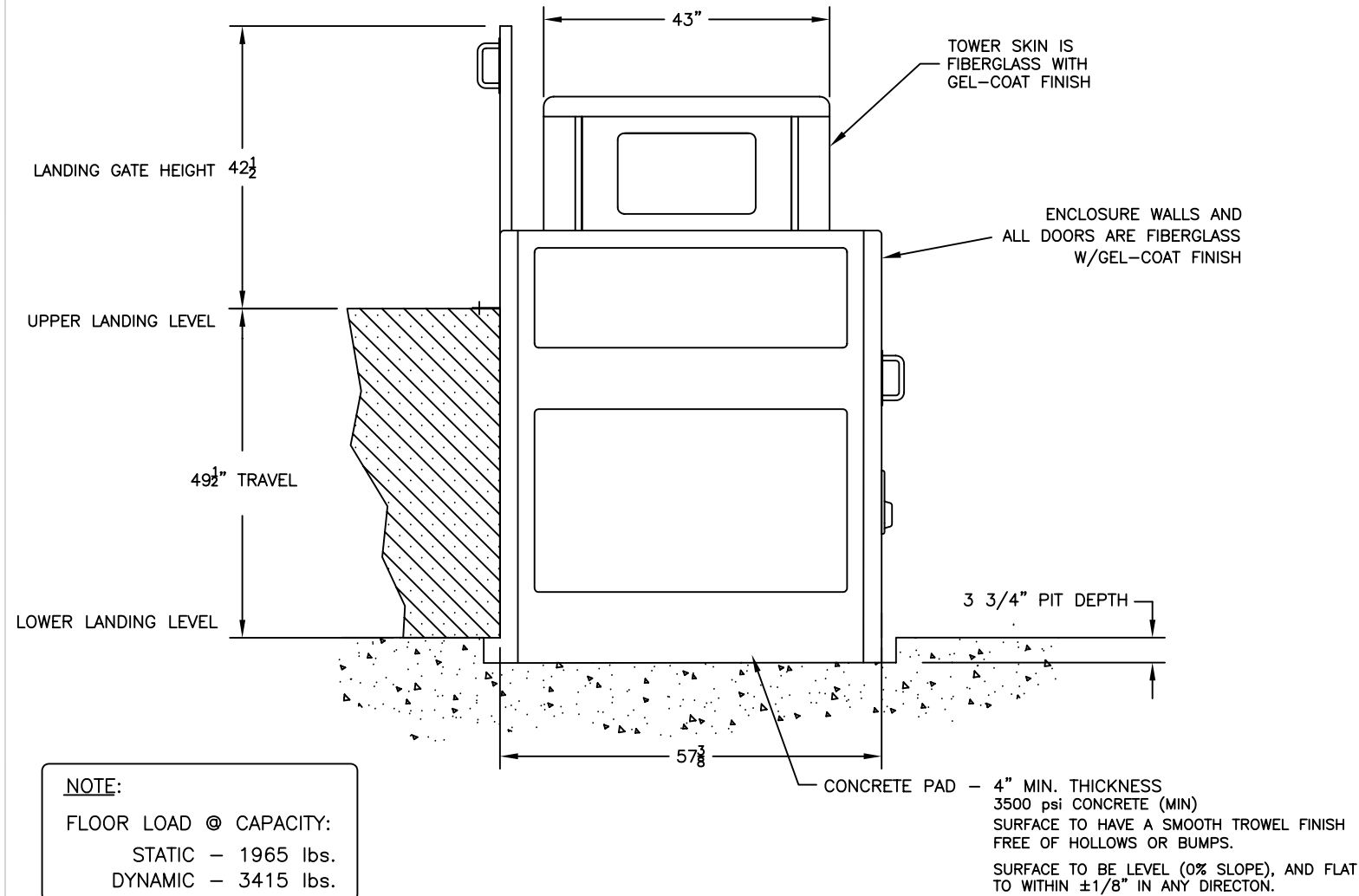
XXXXX



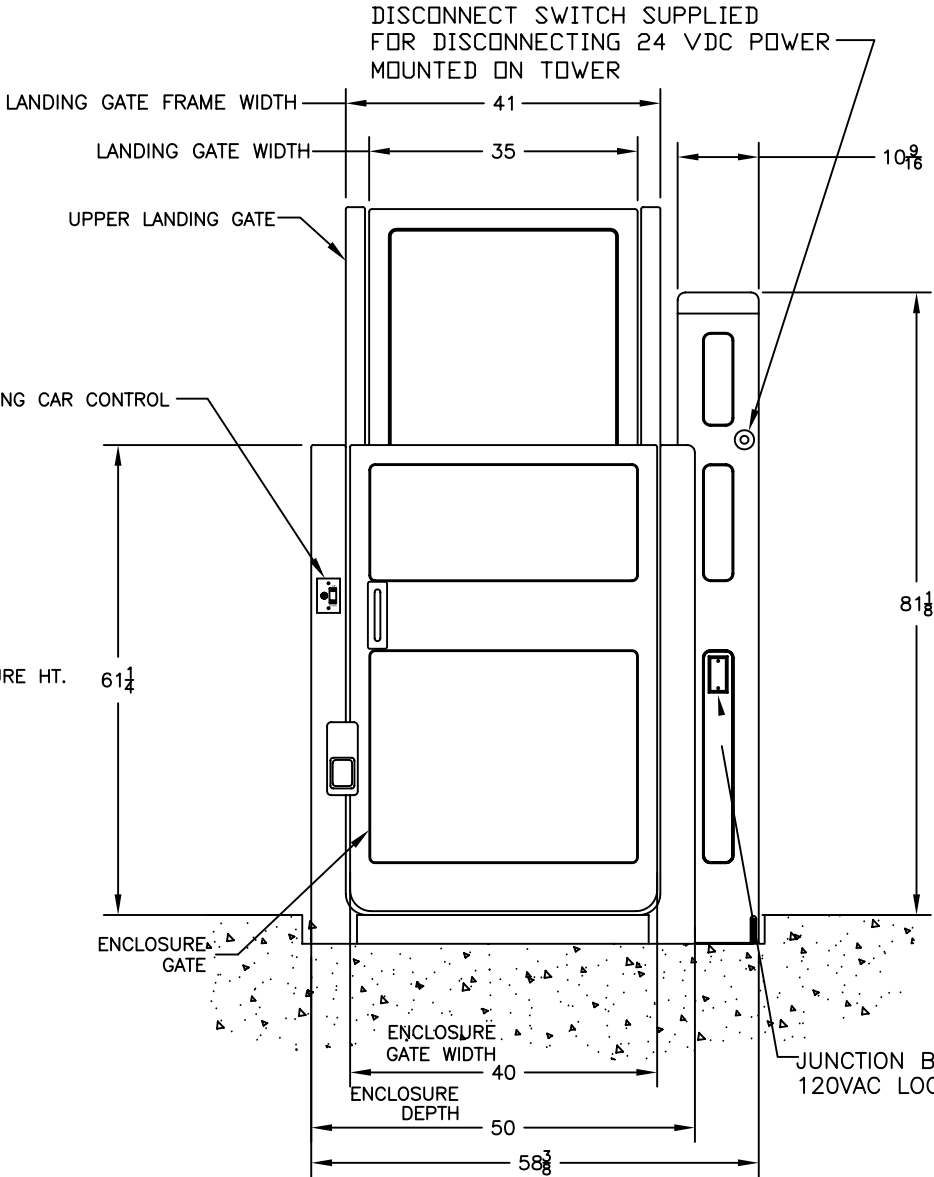
CAR CONTROL  
(MOUNTED ON  
THE PLATFORM)



CAR CONTROL  
(USES A STD. SIZE  
SURFACE MOUNT BOX  
SUPPLIED BY INCOA)



NOTE:  
FLOOR LOAD @ CAPACITY:  
STATIC - 1965 lbs.  
DYNAMIC - 3415 lbs.



ALL DIMENSIONS ARE IN INCHES