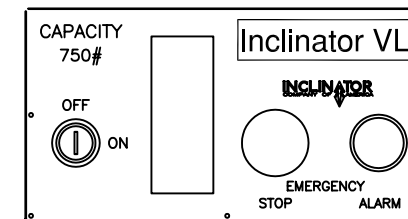
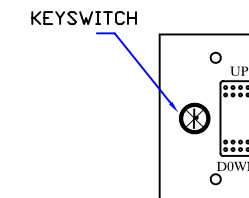


PLATFORM AND TOWER  
FOOTPRINT



CAR CONTROL  
MOUNTED ON PLATFORM



CAR CONTROL  
LOCATED AT  
EACH LANDING

**INCLINATOR**  
COMPANY OF AMERICA  
HARRISBURG, PA

SHOP DRAWING NAME

TYPICAL

PROJECT

ENCLOSURE - C

GENERAL CONTRACTOR

EQUIPMENT SUPPLIED BY:

TYPICAL

SPECIFICATIONS

L-144  
2 LANDING  
VERTICAL LIFT

CAR 36"Dx48"Wx42"H CODE(S) 3,5  
CAPACITY 750 LBS. AT 10 F.P.M.  
FINISH: BEIGE

- ☒ ALL DOORS MUST BE INTERLOCKED
- ☒ KEYSWITCH OPERATION
- ☐ AUTO FOLD RAMP
- ☐ STATIONARY RAMP
- ☐ LANDING GATE w/ INTERLOCK
- ☐ PLATFORM GATE WITH INTERLOCK
- ☒ EMERGENCY ALARM
- ☒ EMERGENCY STOP
- ☒ MANUAL LOWERING
- ☒ PLATFORM SAFETY MECHANISM
- ☒ INSTANT REVERSE
- ☒ LIMIT SWITCHES
- ☒ ENCLOSURE DOORS BY INCOA
- ☒ ENCLOSURE BY INCOA
- ☐ OUTDOOR PACKAGE
- ☐ VENTILATION FAN

NOTICE TO ELECTRICAL CONTRACTOR:  
INSTALL 110v. SINGLE PHASE  
DISCONNECT SWITCH

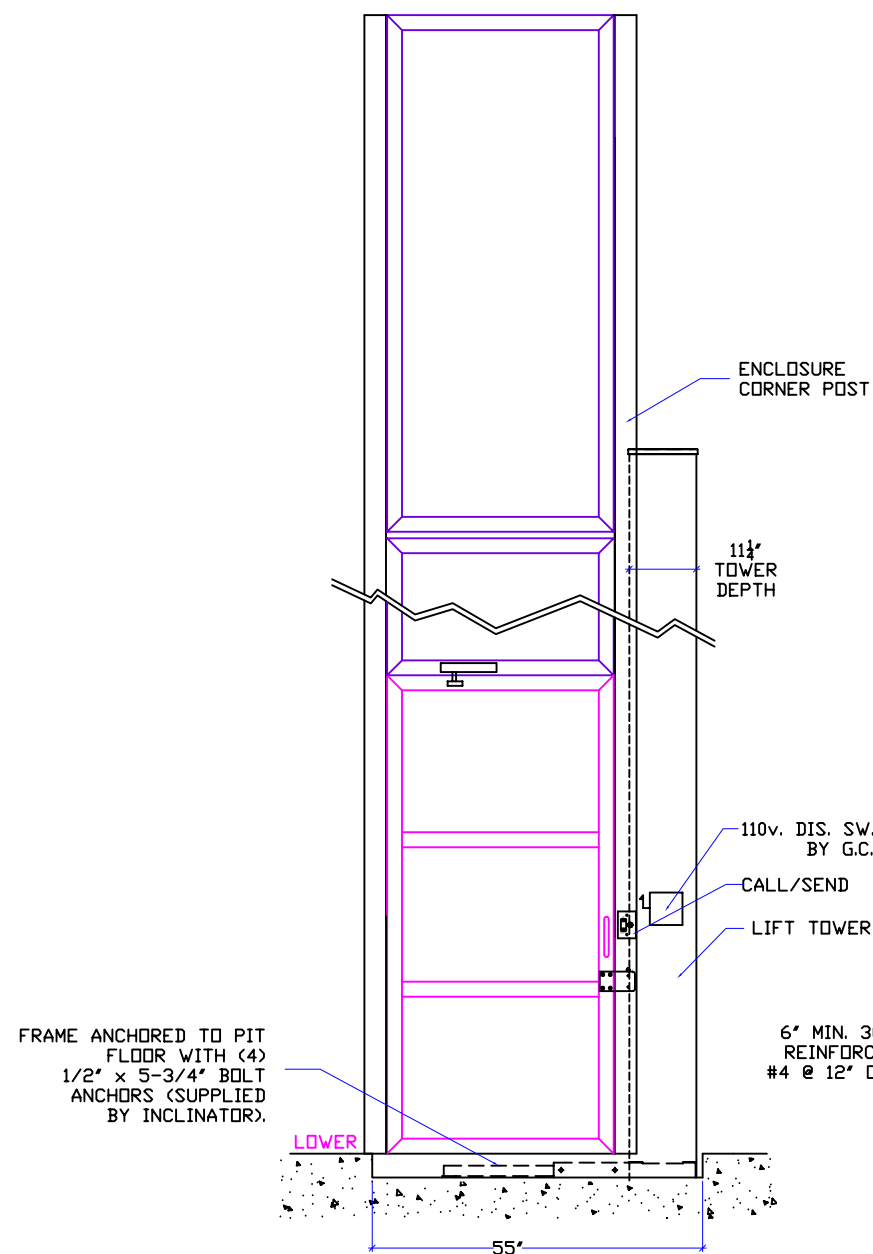
1 H.P. MOTOR 120v. SINGLE PHASE  
60 CYCLE  
20 AMP MAIN LINE FUSE

NOTE: ALL HOISTWAY CONSTRUCTION  
MUST COMPLY WITH NATIONAL,  
STATE, AND LOCAL CODES. PLEASE  
ADVISE INCOA OF ANY CHANGES  
NEEDED TO THE DRAWING FOR  
COMPLIANCE IN YOUR AREA.

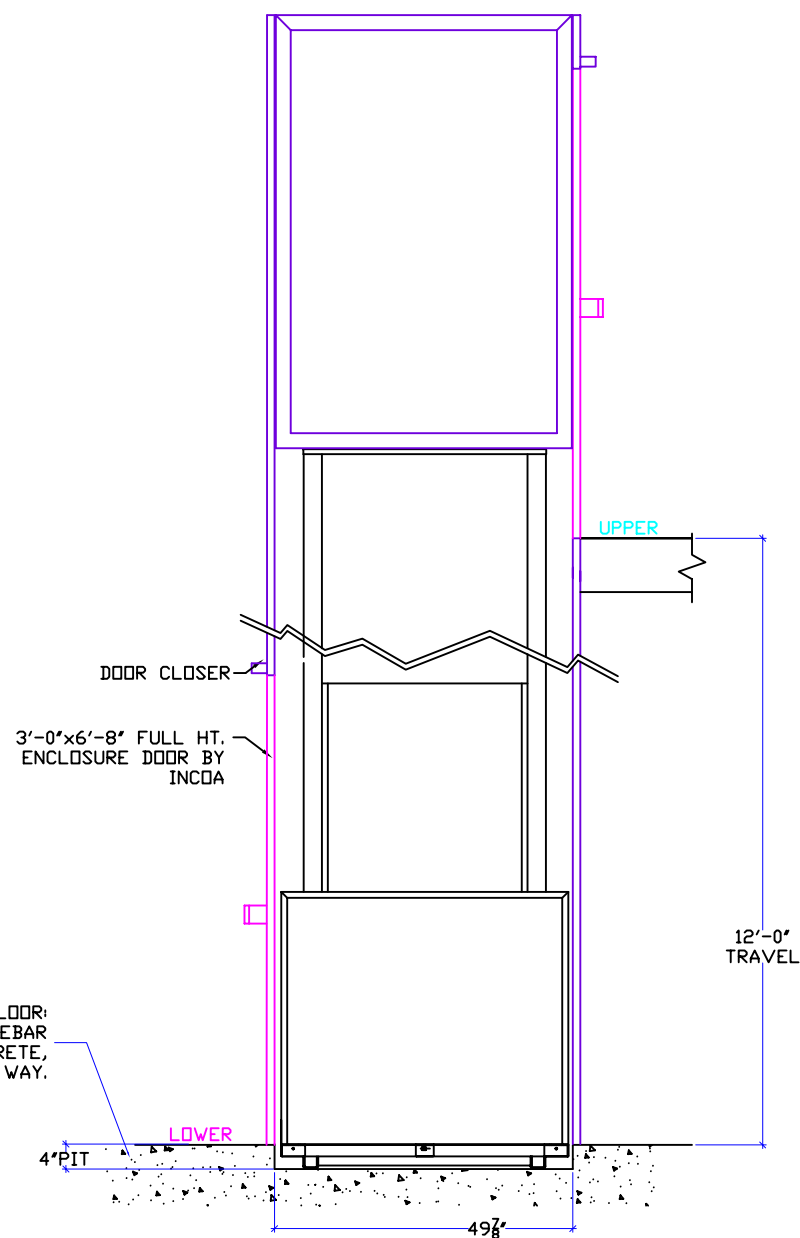
INCOA JOB # -  
DEALER P.O. # -  
DRAWING BY: J.PETTYJOHN  
DATE: 02/21/2008

DRAWING IDENTIFICATION NUMBER

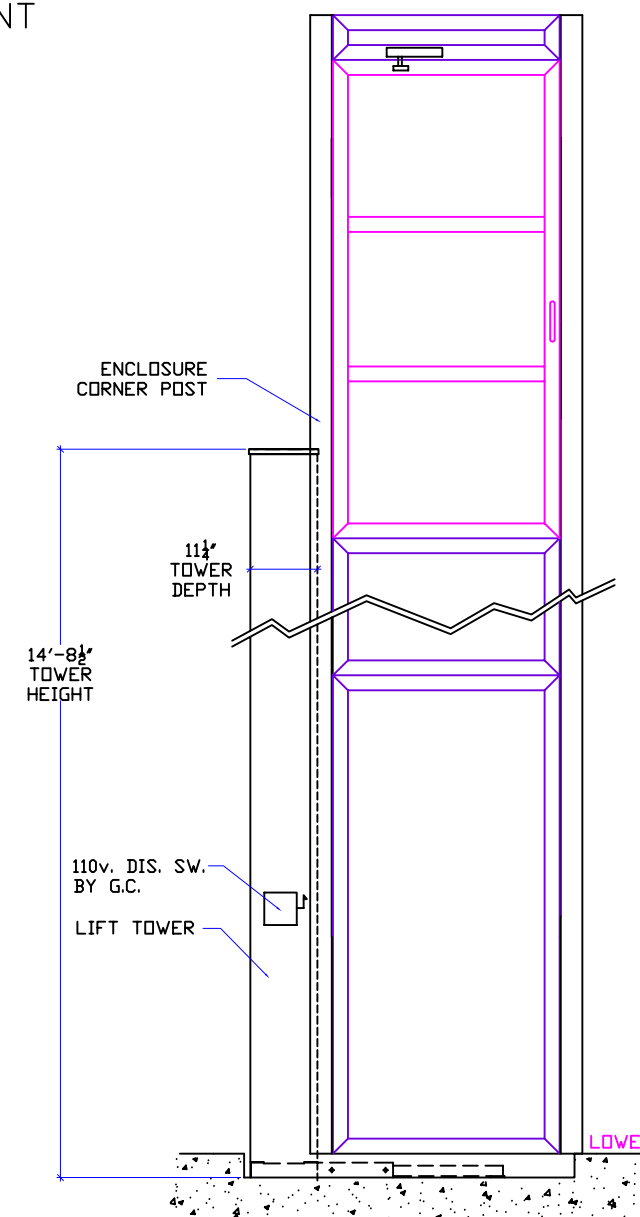
XXXX



SECTION A-A



SECTION B-B



SECTION C-C