

INCLINATOR
COMPANY OF AMERICA
HARRISBURG, PA

ORDER REFERENCE

PROJECT: SLIDE-UP
DOORS & GATES

GENERAL
CONTRACTOR: -

EQUIPMENT INSTALLED
BY: -

SPECIFICATIONS

MODEL: DW-500

LANDINGS: 3

CODE(S): 5 (SLIDE-UP GATES & DOORS)

CAPACITY: 500#

SPEED: AT 33 F.P.M.±4

SUSPENSION 1 WIRE ROPE 5,700 T.S. IMP.PLOW
MEANS: STEEL 1/4" x 8 x 19 WSC

CAR CONSTRUCTION: STAINLESS STEEL

NOTE: ALL MANUFACTURER SUPPLIED CAR AND EQUIPMENT OPTIONS ARE
NOTED ON THE CONFIRMING ORDER SHEET.

DISCLAIMER: ONCE DRAWINGS HAVE BEEN APPROVED,
SIGNED AND WITHIN 5 DAYS OF PRODUCTION, THE
CUSTOMER WILL BEAR ALL RESPONSIBILITY AND LIABILITY
OF FINISHED UNIT.

PLEASE REFER ANY QUESTION TO YOUR
SALES REPRESENTATIVE

☐ APPROVED

☐ UNAPPROVED

SIGNATURE

DATE

DWG VIEW

COVER SHEET

PART NUMBER

80205321

REV.DATE



DRAWING TITLE

SLIDE-UP DOORS/GATES

DRAWING NO.

TYPICAL

PAGE:
1/5

DRAWN BY:
J.PETTYJOHN

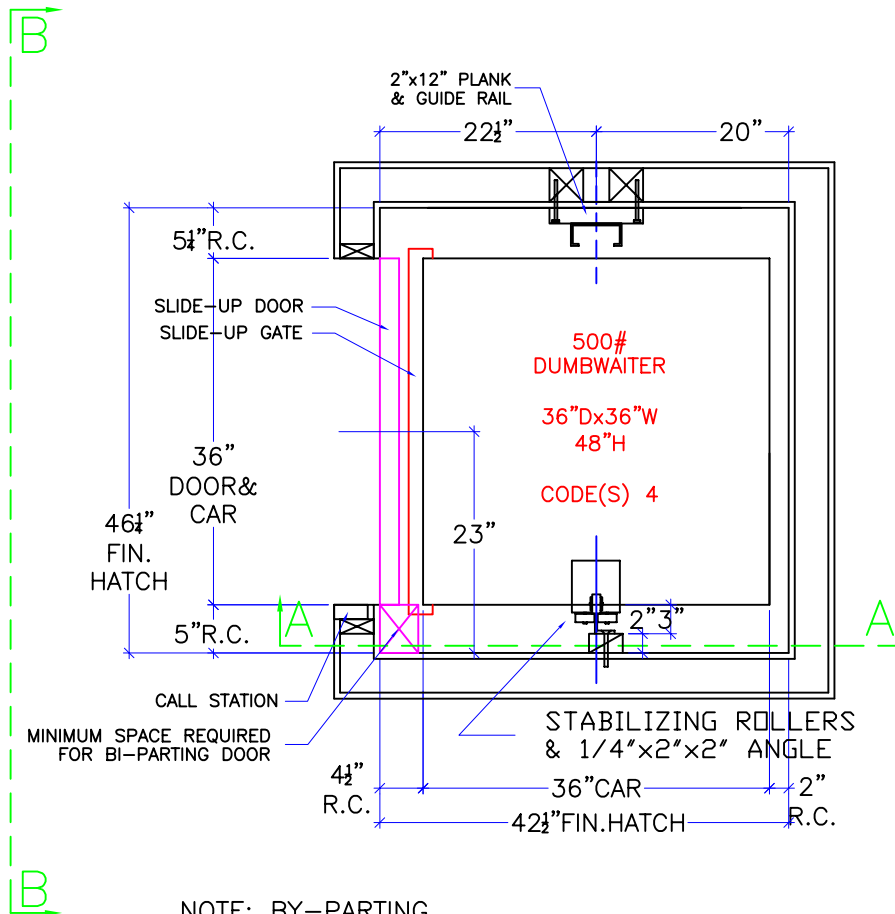
DWG. DATE
04/07/2008

JOB OR APP.#
-

DEALER P.O.#
-

DWG. SCALE
1:24

REV.LEVEL(1-3)
-



NOTE: BY-PARTING
DOORS AND GATES
NOT AVAILABLE WHEN
FLOOR LOADING.

NOTE:
2" RUNNING CLEARANCE
MUST BE REDUCED TO
1/2" MIN./1 1/2" MAX.
AT THE LANDING LEVELS.

NOTE:
ALL HOISTWAY CONSTRUCTION MUST COMPLY WITH NATIONAL, STATE,
AND LOCAL
CODES. HOISTWAY MUST BE PLUMB AND STRAIGHT FROM TOP TO
BOTTOM WITH NO PROJECTIONS INTO THE HOISTWAY.

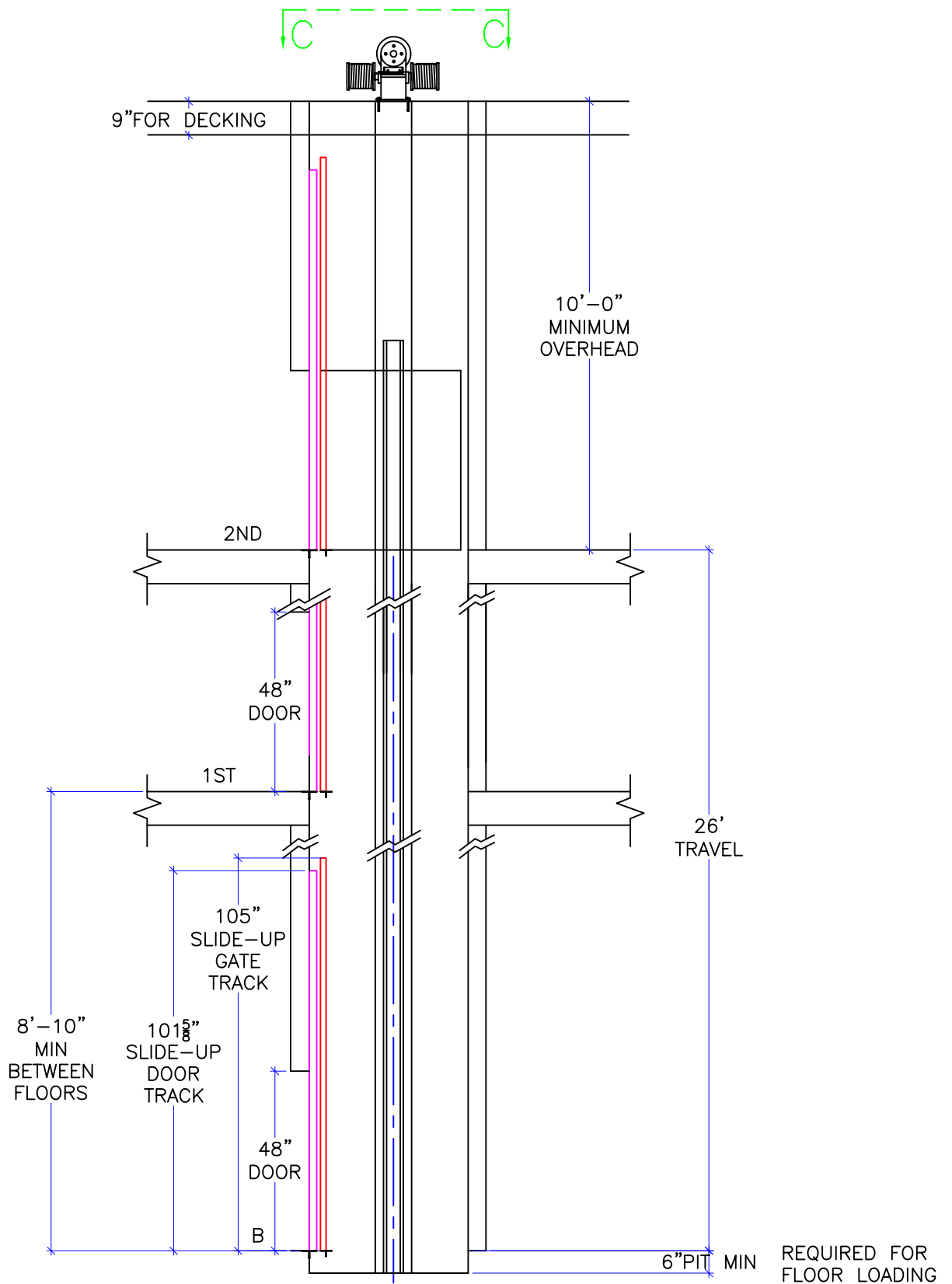
NOTE:
G.C. TO BUILD OUT HOISTWAY
AS NEEDED TO MAINTAIN 3"
REQUIRED FOR STABILIZER.

NOTICE TO ELECTRICAL CONTRACTOR:

- ALL ELECTRICAL WIRING MUST BE DONE BY A JOURNEYMAN MECHANIC AND MUST MEET ALL NATIONAL, STATE, AND LOCAL CODES.
- BRING (3) #10 W/GND FROM RESIDENCE INCOMING POWER PANEL 30AMP BREAKER(240V, NEUTRAL, GROUND)TO THE MACHINE ROOM.
- BRING (2) #12 W/GND FROM RESIDENCE INCOMING POWER PANEL 20AMP GFI BREAKER(120V, NEUTRAL, GROUND)TO THE MACHINE ROOM.
- REQUIRED LOW VOTAGE WIRING IS SUPPLIED BY MANUFACTURER. ALL EXTENSIONS ADDITIONS, ETC. SHALL BE DONE WITH THE SAME SIZE AND TYPE OF WIRE AS ORIGINALLY SUPPLIED BY THE MANUFACTURER.
- ALL MEANS FOR ACCESS TO EQUIPMENT SHALL BE PROVIDED WITH A LOCK. ALL SHAFT DOORS MUST BE INTERLOCKED.

DWG VIEW HOISTWAY LAYOUT				PART NUMBER 80205321		REV.DATE — — —	
DRAWING TITLE SLIDE-UP DOORS/GATES				DRAWING NO. TYPICAL			
PAGE: 2/5	DRAWN BY: J.PETTYJOHN	DWG. DATE 04/07/2008	JOB OR APP.# —	DEALER P.O.# —	DWG. SCALE 1:24	REV.LEVEL(1-3) —	

INCLINATOR
COMPANY OF AMERICA
HARRISBURG, PA



DWG VIEW

SECTION A-A

PART NUMBER

80205321

REV. DATE

—

—

—

DRAWING TITLE

SLIDE-UP DOORS/GATES

DRAWING NO.

TYPICAL

PAGE:
3/5

DRAWN BY:
J. PETTYJOHN

DWG. DATE
04/07/2008

JOB OR APP.#
—

DEALER P.O.#
—

DWG. SCALE
1:24

REV. LEVEL (1-3)
—

2 LANDING CONTROLLER
240v. 1PH SLACK CABLE DISCONNECT SWITCH

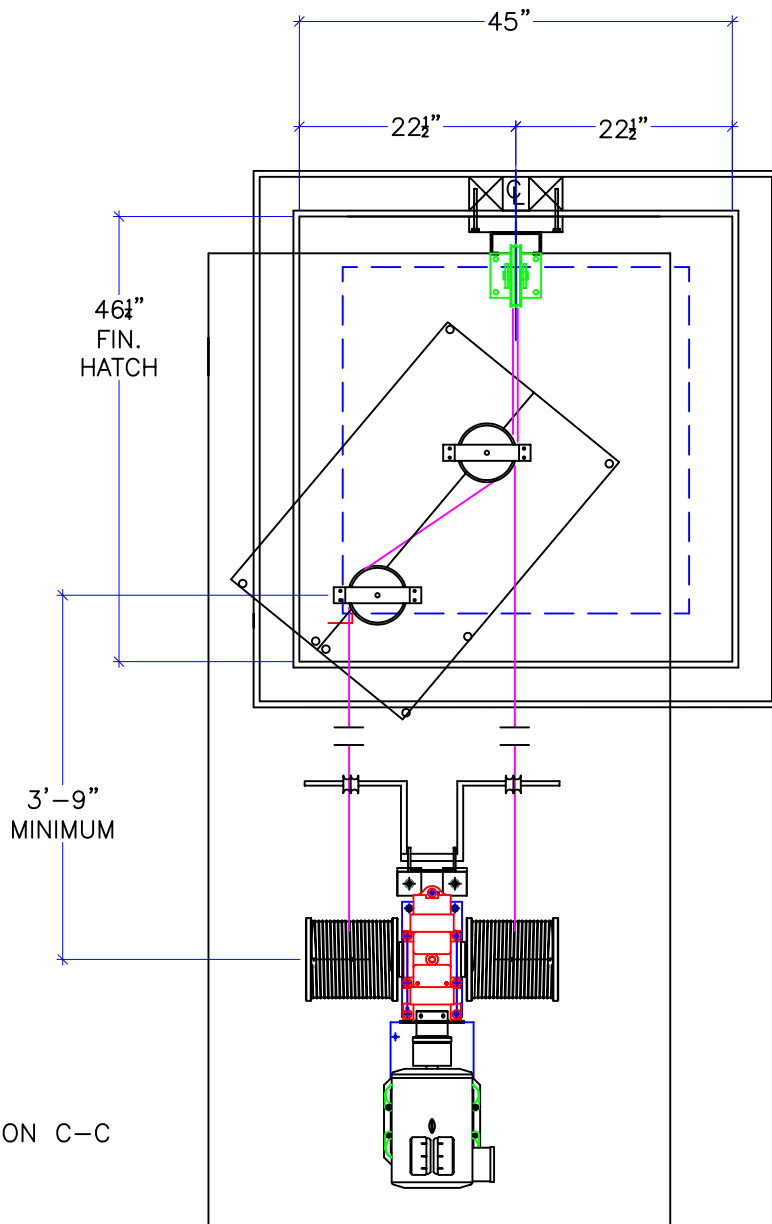
SLACK CABLE ROLLER

GEARBOX MUST BE MOUNTED w\ SOUND BASE: MIN. (4) 1/2" FASTENERS, MIN. PULLOUT 10,000#

NOTE: DECKING TO SUPPORT 1100 LBS STATIC LOAD, 2200 LBS IMPACT LOAD. BY G.C.

SECTION B-B

NOTE: HOISTING MACHINE IS MOUNTED TO (2) 4'-0"x8'-3/4" PLYWOOD PLANKS, GLUED AND LAGGED TO JOISTS THROUGH BOLT HOISTING MACHINE WHENEVER POSSIBLE



SECTION C-C

DWG VIEW

MACHINE ROOM DETAILS

PART NUMBER

80205321

REV.DATE

-

-

-

DRAWING TITLE

SLIDE-UP DOORS/GATES

DRAWING NO.

TYPICAL

PAGE:

4/5

DRAWN BY:

J.PETTYJOHN

DWG. DATE

04/07/2008

JOB OR APP.#

-

DEALER P.O.#

-

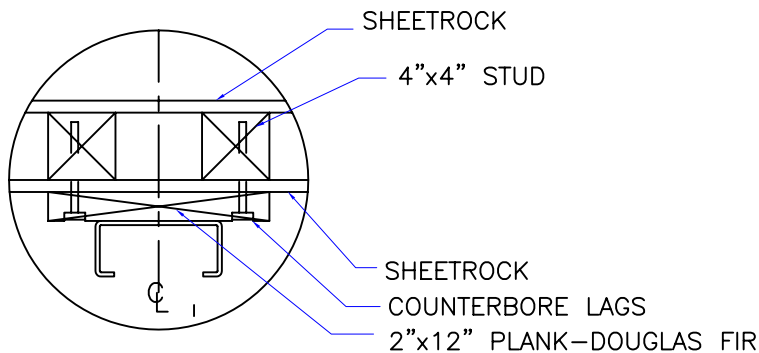
DWG. SCALE

1:24

REV.LEVEL(1-3)

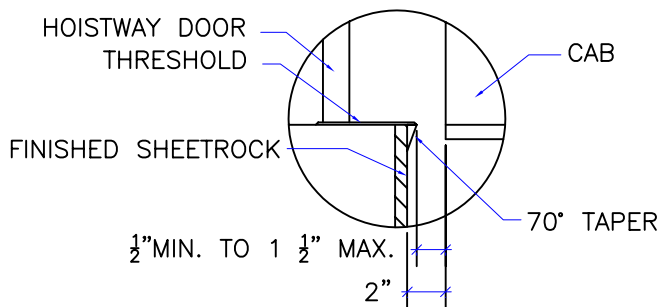
-

INCLINATOR
COMPANY OF AMERICA
HARRISBURG, PA



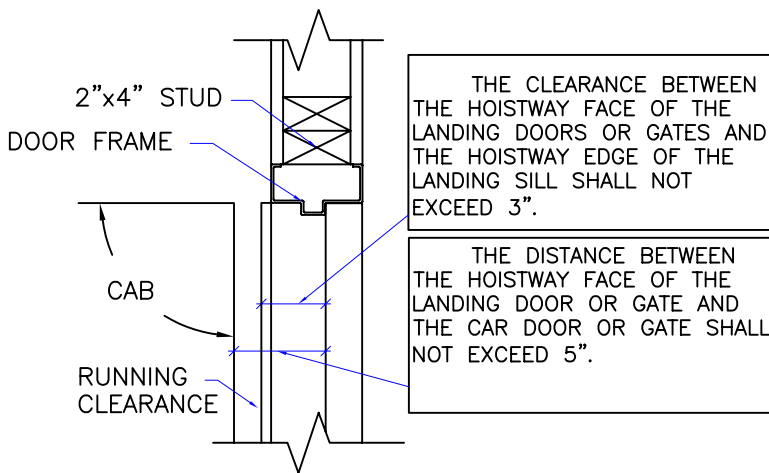
NOTE:
WHEN STUD AND SHEETROCK CONSTRUCTION
IS USED ON THE GUIDE RAIL SUPPORT WALL
4"x4" STUDDING IS NEEDED BEHIND THE
2"x12" PLANK.

RAIL DETAIL



DOOR SILLS TO BE INSTALLED BY G.C.
AFTER LIFT SUPPLIER HAS INSTALLED
A RUNNING PLATFORM. SILL TO BE
BROUGHT OUT TO NOT LESS THAN 1/2"
AND NOT MORE THAN 1 1/2" TO THE
RUNNING PLATFORM.

SILL DETAIL



DOOR FRAME DETAIL

1. REACTIONS ON ALL SHEAVES AND MOUNTINGS
STATIC = 1,100 LBS.
IMPACT = 2,200 LBS.
2. RAIL FASTENING TO 2" x 12" PLANK
#14 x 1 3/4" TYPE A S.M.S. RAIL IS PRE-
DRILLED AT FACTORY.
3. BOLT FASTENING OF CAR TO TROLLEY
1/2" - 13 x 4" SOCKET HD CAP SCREWS.

TECHNICAL DATA

DWG VIEW

DETAILS, DATA, CODES

PART NUMBER

80205321

REV.DATE

-

-

-

DRAWING TITLE

SLIDE-UP DOORS/GATES

DRAWING NO.

TYPICAL

PAGE:
5/5

DRAWN BY:
J.PETTYJOHN

DWG. DATE
04/07/2008

JOB OR APP.#
-

DEALER P.O.#
-

DWG. SCALE
1:24

REV.LEVEL(1-3)
-