

INCLINATOR
COMPANY OF AMERICA
HARRISBURG, PA

ORDER REFERENCE

PROJECT: TYPICAL ELEVETTE
MRL - CHAIN DRIVE

GENERAL
CONTRACTOR: -

EQUIPMENT INSTALLED
BY: -

SPECIFICATIONS

MODEL: "MRL" CHAIN DRIVE - 200

LANDINGS: 3

CODE(S): 4

CAPACITY: 950#

SPEED: AT 40 F.P.M.±4

SUSPENSION (2) #60 ROLLER CHAINS
MEANS:

CAR 3/4" HARDWOOD UNFINISHED
CONSTRUCTION:

NOTE: ALL MANUFACTURER SUPPLIED CAR AND EQUIPMENT OPTIONS ARE
NOTED ON THE CONFIRMING ORDER SHEET.

DISCLAIMER: ONCE DRAWINGS HAVE BEEN APPROVED,
SIGNED AND WITHIN 5 DAYS OF PRODUCTION, THE
CUSTOMER WILL BEAR ALL RESPONSIBILITY AND
LIABILITY OF FINISHED UNIT.

PLEASE REFER ANY QUESTION TO YOUR
SALES REPRESENTATIVE

☐ APPROVED

☐ UNAPPROVED

SIGNATURE

DATE

DWG VIEW

COVER SHEET

PART NUMBER 80205326

REV.DATE



DRAWING TITLE
TYPICAL MRL - CHAIN DRIVE

DRAWING NO.

-

-
-
-

PAGE:
1/5

DRAWN BY:
J.PETTYJOHN

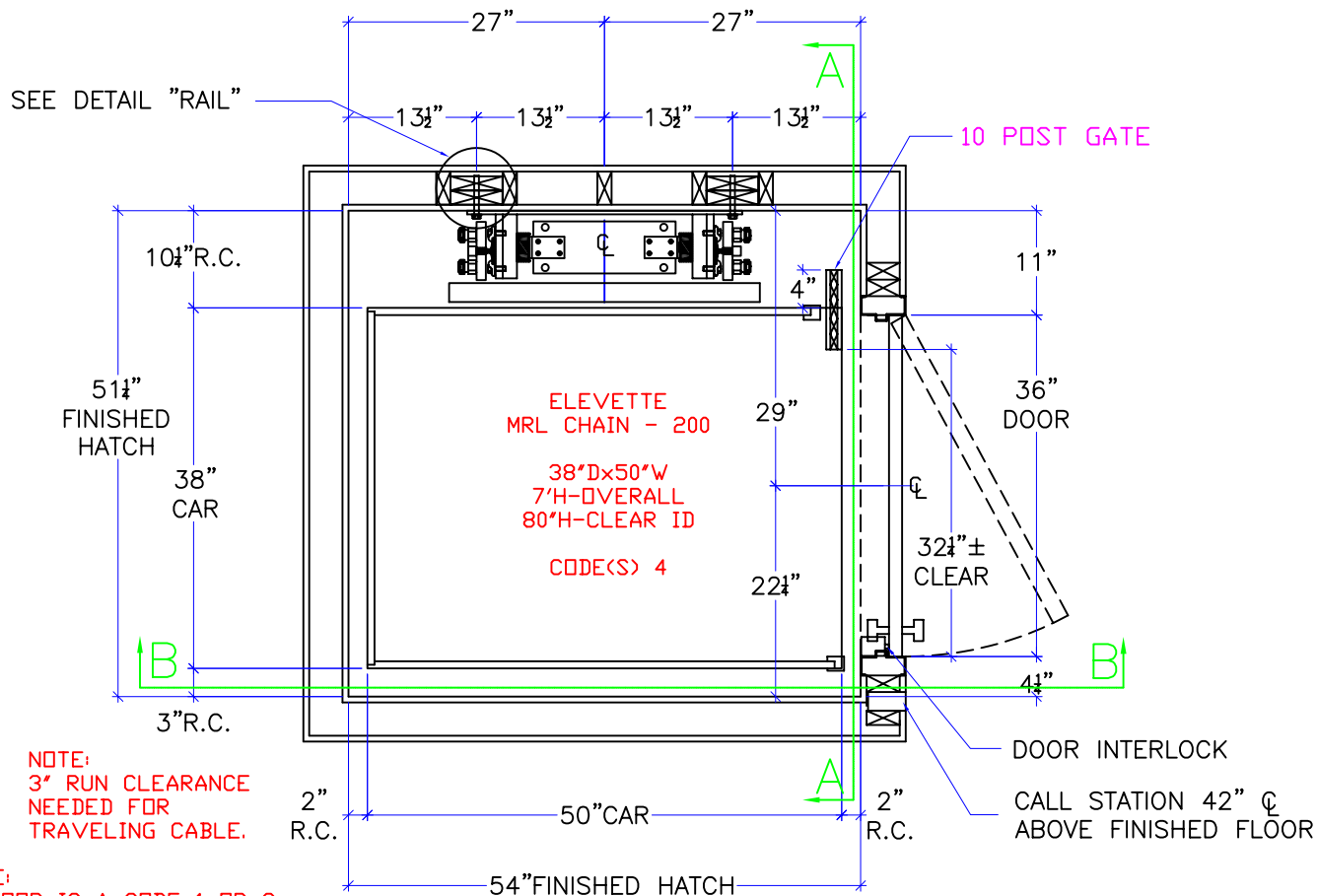
DWG. DATE
02/25/2008

JOB OR APP.#
-

DEALER P.O.#
-

DWG. SCALE
1:24

REV.LEVEL(1-3)
-



NOTE:
ALL HOISTWAY CONSTRUCTION MUST COMPLY WITH NATIONAL,
STATE, AND LOCAL
CODES. HOISTWAY MUST BE PLUMB AND STRAIGHT FROM TOP TO
BOTTOM WITH NO PROJECTIONS INTO THE HOISTWAY.

DWG VIEW

HOISTWAY LAYOUT

PART NUMBER

80205326

REV.DATE

INCLINATOR
COMPANY OF AMERICA
HARRISBURG, PA

DRAWING TITLE

TYPICAL MRL - CHAIN DRIVE

DRAWING NO.

-

-

PAGE:
2/5

DRAWN BY:
J.PETTYJOHN

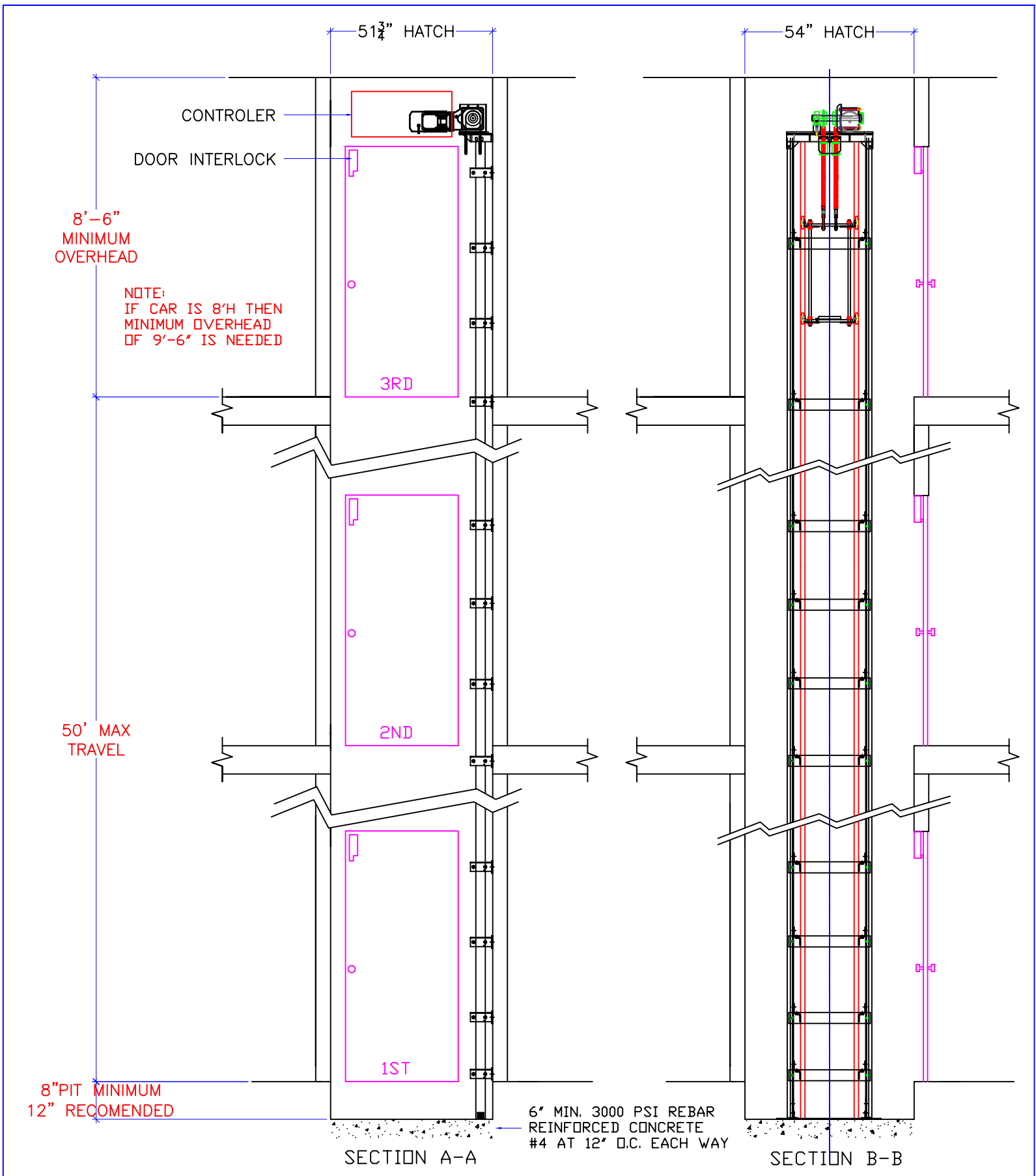
DWG. DATE
02/25/2008

JOB OR APP.#
-

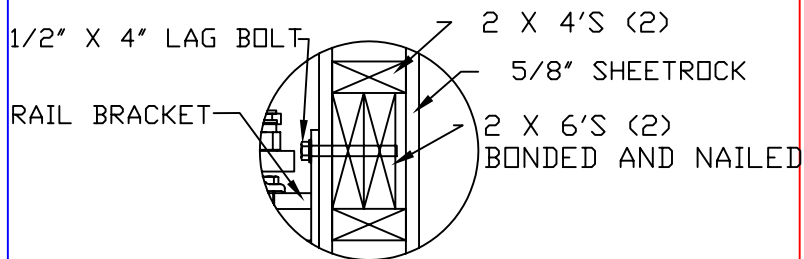
DEALER P.O.#
-

DWG. SCALE
1:24

REV.LEVEL(1-3)
-

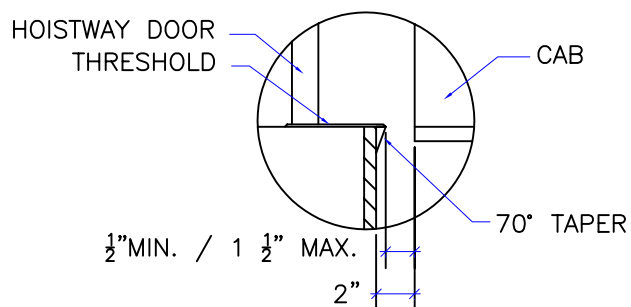


DWG VIEW				PART NUMBER		REV. DATE	
SECTION VIEWS				80205326		-	
DRAWING TITLE				DRAWING NO.		-	
TYPICAL MRL - CHAIN DRIVE				-		-	
PAGE:	DRAWN BY:	DWG. DATE	JOB OR APP.#	DEALER P.O.#	DWG. SCALE	REV. LEVEL(1-3)	
3/5	J. PETTYJOHN	02/25/2008	-	-	1:24	-	



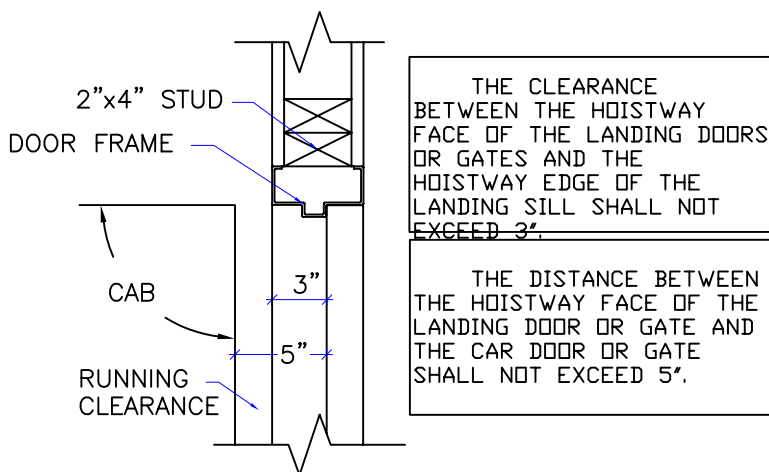
NOTE:
WHEN STUD AND SHEETROCK CONSTRUCTION
IS USED ON THE RAIL BRACKET SUPPORT WALL
DBL 2 X 6 STUDING IS NEEDED TO MOUNT THE
RAIL BRACKETS. DO NOT USE METAL STUDS.

RAIL DETAIL

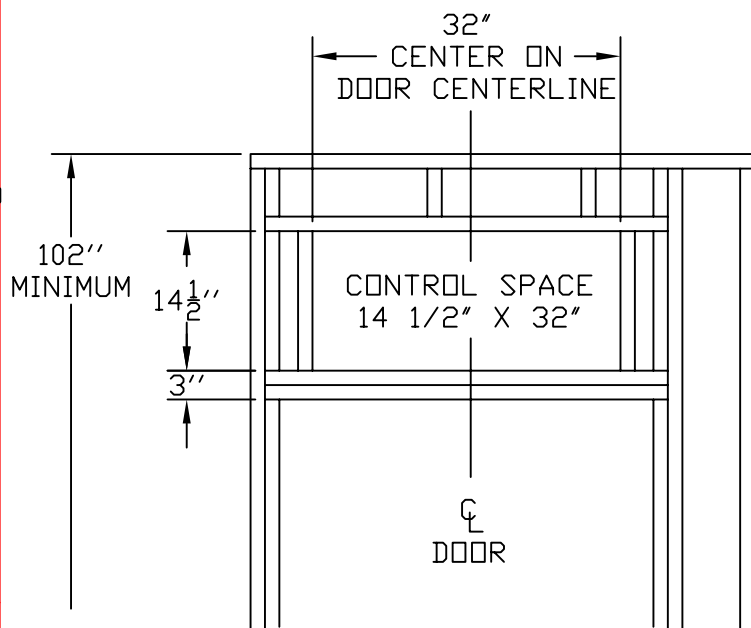


DOOR SILLS TO BE INSTALLED BY G.C.
AFTER LIFT SUPPLIER HAS INSTALLED
A RUNNING PLATFORM. SILL TO BE
BROUGHT OUT TO NOT LESS THAN 1/2"
AND NOT MORE THAN 1 1/2" TO THE
RUNNING PLATFORM.

SILL DETAIL

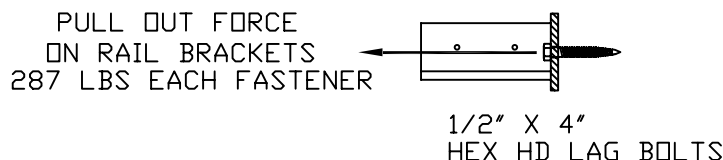


DOOR FRAME DETAIL

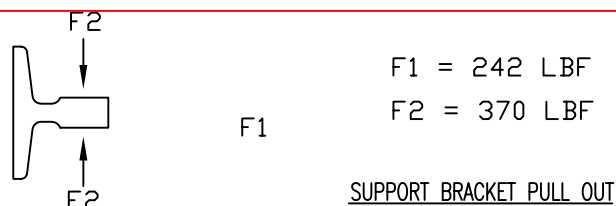


NOTE:
CONTROL SPACE MUST BE SQUARE AND TO SIZE.
GIVEN DIMENSIONS ARE MINIMUM SIZE AND MAY BE UP TO
1/8\"

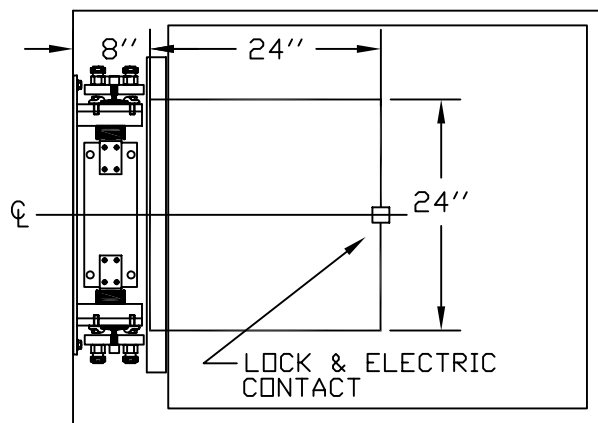
UPPER DOOR OVERHEAD FRAMING DETAIL



RAIL REACTIONS



SUPPORT BRACKET PULL OUT



OPTIONAL ACCESS HATCH

DWG VIEW

DETAILS, DATA, CODES

PART NUMBER

80205326

REV. DATE

—

—

—

DRAWING TITLE

TYPICAL MRL — CHAIN DRIVE

DRAWING NO.

—

PAGE:
4/5

DRAWN BY:
J. PETTYJOHN

DWG. DATE
02/25/2008

JOB OR APP.#
—

DEALER P.O.#
—

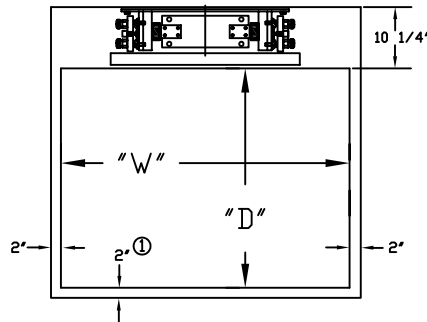
DWG. SCALE
1:24

REV. LEVEL (1-3)
—

1. EACH RAIL BRACKET FASTENER SHALL PROVIDE A MINIMUM PULL OUT OF 287 LBS.
2. RAIL BRACKET SPACING SHALL BE DETERMINED BY THE MANUFACTURER.
3. RAIL FASTENING MUST BE ABLE TO SUPPORT THE LOADS IMPOSED. SEE RAIL REACTIONS AND SUPPORT BRACKET PULLOUTS ON MAIN BODY OF DRAWING BRACKETS ARE PRE-DRILLED.
4. PIT FLOOR SHALL BE CONSTRUCTED TO WITHSTAND AN IMPACT LOAD OF 3123 LBS.

MAXIMUM SIZE OF CAR 15 FT. SQ. (NET)
 MAXIMUM "D" DIMENSION OF CAR: 44"
 MINIMUM "W" DIMENSION OF CAR: 42"^①
 MINIMUM PIT DEPTH: 8"

- ① "W" DIMENSIONS LESS THAN 48"
 REQUIRE 1" ADDITIONAL CLEARANCE
 OPPOSITE THE RAIL.

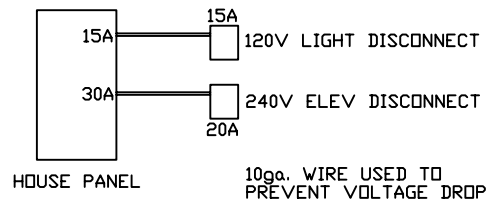


TECHNICAL DATA

1. NOTICE TO ELECTRICAL CONTRACTOR:

- * ALL ELECTRICAL WIRING MUST BE DONE BY A JOURNEYMAN MECHANIC AND MUST MEET ALL NATIONAL, STATE, AND LOCAL CODES.
- * BRING (3) #10 W/GND FROM ELEVATOR DISCONNECT SWITCH LOCATED NEAR RESIDENCE INCOMING POWER PANEL (240V, NEUTRAL, GROUND) TO THE TOP OF THE HOISTWAY. DISCONNECT IS SUPPLIED BY OTHERS AND MUST BE LOCKABLE.
- * BRING (2) #12 W/GND FROM A SEPARATE DEDICATED DISCONNECT NEAR THE RESIDENCE INCOMING POWER PANEL FOR THE CAR LIGHT, UTILITY LIGHT & GFI RECEPTACLE TO THE TOP OF THE HOISTWAY. UTILITY LIGHT, GFI RECEPTACLE, AND LOCKABLE DISCONNECT TO BE SUPPLIED BY OTHERS.
- * REQUIRED LOW VOLTAGE WIRING IS SUPPLIED BY MANUFACTURER. ALL EXTENSIONS ADDITIONS, ETC. SHALL BE DONE WITH THE SAME SIZE AND TYPE OF WIRE AS ORIGINALLY SUPPLIED BY THE MANUFACTURER.

2H.P. MOTOR 208/240 VOLTS 3 PHASE
 60 CYCLE (RUNS ON SINGLE PHASE)
 6.1 AMPS RUN
 30 AMP MAIN LINE BREAKER



2. NOTICE TO G.C.

- * NO OTHER WIRING OR PIPING NOT PART OF THE ELEVATOR SYSTEM SHALL BE PLACED IN THE HOISTWAY.
- * SWING TYPE SHAFT DOORS WITH LATCHING HARDWARE TO BE SUPPLIED BY OTHERS.
- * PROVIDE A 24" X 24" ACCESS HATCH IN THE CEILING OF THE HOISTWAY TO FACILITATE INSTALLATION OF MACHINE AND EQUIPMENT. (SEE HATCH ACCESS PANEL) ACCESS HATCH MUST HAVE FLAME SPREAD RATE EQUIVELANT OR GREATER AS THE CEILING OF THE HOISTWAY.
- * LOW LYING AREAS MUST PROVIDE ADEQUATE DRAINAGE IN THE PIT TO PREVENT WATER FROM ACCUMULATING.

3. NOTICE TO INSTALLER (MANDATORY EQUIPMENT)

- * A TELEPHONE LINE SHALL BE SUPPLIED TO THE TOP OF THE HOISTWAY AND SHALL BE CONNECTED TO A 24 HOUR CENTRAL EXCHANGE.
- * ALL MEANS FOR ACCESS TO EQUIPMENT OR HOISTWAY SHALL BE PROVIDED WITH A LOCK AND ELECTRICAL CONTACT. ALL SHAFT DOORS MUST BE INTERLOCKED.

DWG VIEW		PART NUMBER		REV.DATE	
TECHNICAL DATA, ELEVATOR NOTES		80205326		-	
DRAWING TITLE		DRAWING NO.		-	
TYPICAL MRL - CHAIN DRIVE		-		-	
PAGE:	DRAWN BY:	DWG. DATE	JOB OR APP.#	DEALER P.O.#	DWG. SCALE
5/5	J.PETTYJOHN	02/25/2008	-	-	1:24
REV.LEVEL(1-3)					-