

INCLINATOR
COMPANY OF AMERICA
HARRISBURG, PA

ORDER REFERENCE

PROJECT: TYPICAL - #950
ELEVETTE HYDRAULIC

ARCHITECT: -

EQUIPMENT INSTALLED -
BY:

SPECIFICATIONS

MODEL: "HYDRAULIC" DRIVE - 200

LANDINGS: 4

CODE(S): 1,5

CAPACITY: 950#

SPEED: AT 36 F.P.M.±4

SUSPENSION 2 WIRE ROPES 11,700 LBS. TRACTION
MEANS: STL. STEEL 3/8" x 8 x 19 IWRC

CAR
CONSTRUCTION: 3/4" HARDWOOD VENEER

NOTE: ALL MANUFACTURER SUPPLIED CAR AND EQUIPMENT OPTIONS ARE
NOTED ON THE CONFIRMING ORDER SHEET.

DISCLAIMER: ONCE DRAWINGS HAVE BEEN APPROVED,
SIGNED AND WITHIN 5 DAYS OF PRODUCTION, THE
CUSTOMER WILL BEAR ALL RESPONSIBILITY AND
LIABILITY OF FINISHED UNIT.

PLEASE REFER ANY QUESTION TO YOUR
SALES REPRESENTATIVE

☐ APPROVED

☐ UNAPPROVED

SIGNATURE

DATE

DWG VIEW

COVER SHEET

PART NUMBER 80205325

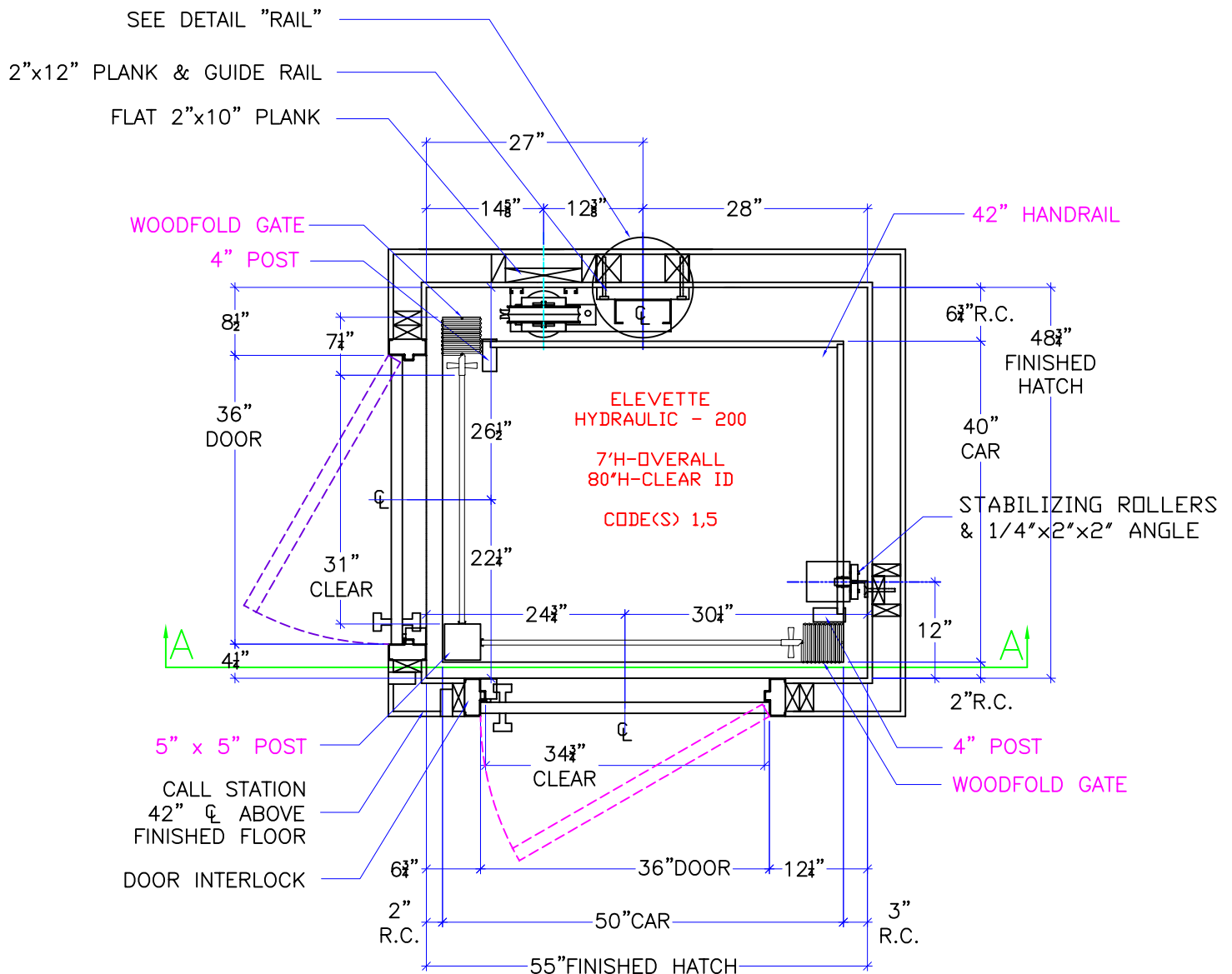
REV.DATE



DRAWING TITLE
TYPICAL #950 HYDRAULIC

DRAWING NO.
XXXX

PAGE: 1/5	DRAWN BY: J.PETTYJOHN	DWG. DATE 02/25/2008	JOB OR APP.# -	DEALER P.O.# -	DWG. SCALE 1:24	REV.LEVEL(1-3) -
--------------	--------------------------	-------------------------	-------------------	-------------------	--------------------	---------------------



NOTE:
2" RUNNING CLEARANCE
MUST BE REDUCED TO
1/2" MIN./1 1/2" MAX.
AT THE LANDING LEVELS.

NOTE:
ALL HOISTWAY CONSTRUCTION MUST COMPLY WITH NATIONAL,
STATE, AND LOCAL
CODES. HOISTWAY MUST BE PLUMB AND STRAIGHT FROM TOP TO
BOTTOM WITH NO PROJECTIONS INTO THE HOISTWAY.

NOTE:
G.C. TO BUILD OUT HOISTWAY
AS NEEDED TO MAINTAIN 3"
REQUIRED FOR STABILIZER.

NOTICE TO ELECTRICAL CONTRACTOR:

-ALL ELECTRICAL WIRING MUST BE DONE BY A JOURNEYMAN MECHANIC AND MUST MEET ALL NATIONAL, STATE, AND LOCAL CODES.
-BRING (3) #10 W/GND FROM RESIDENCE INCOMING POWER PANEL 30AMP BREAKER(240V, NEUTRAL, GROUND) TO THE MACHINE ROOM.
-BRING (2) #12 W/GND FROM RESIDENCE INCOMING POWER PANEL 20AMP GFI BREAKER(120V, NEUTRAL, GROUND) TO THE MACHINE ROOM.
-REQUIRED LOW VOLTAGE WIRING IS SUPPLIED BY MANUFACTURER. ALL EXTENSIONS ADDITIONS, ETC. SHALL BE DONE WITH THE SAME SIZE
AND TYPE OF WIRE AS ORIGINALLY SUPPLIED BY THE MANUFACTURER.
-A TELEPHONE LINE SHALL BE SUPPLIED TO THE MACHINE ROOM AND SHALL BE CONNECTED TO A 24 HOUR CENTRAL EXCHANGE.
-ALL MEANS FOR ACCESS TO EQUIPMENT SHALL BE PROVIDED WITH A LOCK. ALL SHAFT DOORS MUST BE INTERLOCKED.

DWG VIEW

HOISTWAY LAYOUT

PART NUMBER

80205325

REV.DATE

-

-

-

INCLINATOR
COMPANY OF AMERICA
HARRISBURG, PA

DRAWING TITLE

TYPICAL #950 HYDRAULIC

DRAWING NO.

XXXX

PAGE:
2/5

DRAWN BY:
J.PETTYJOHN

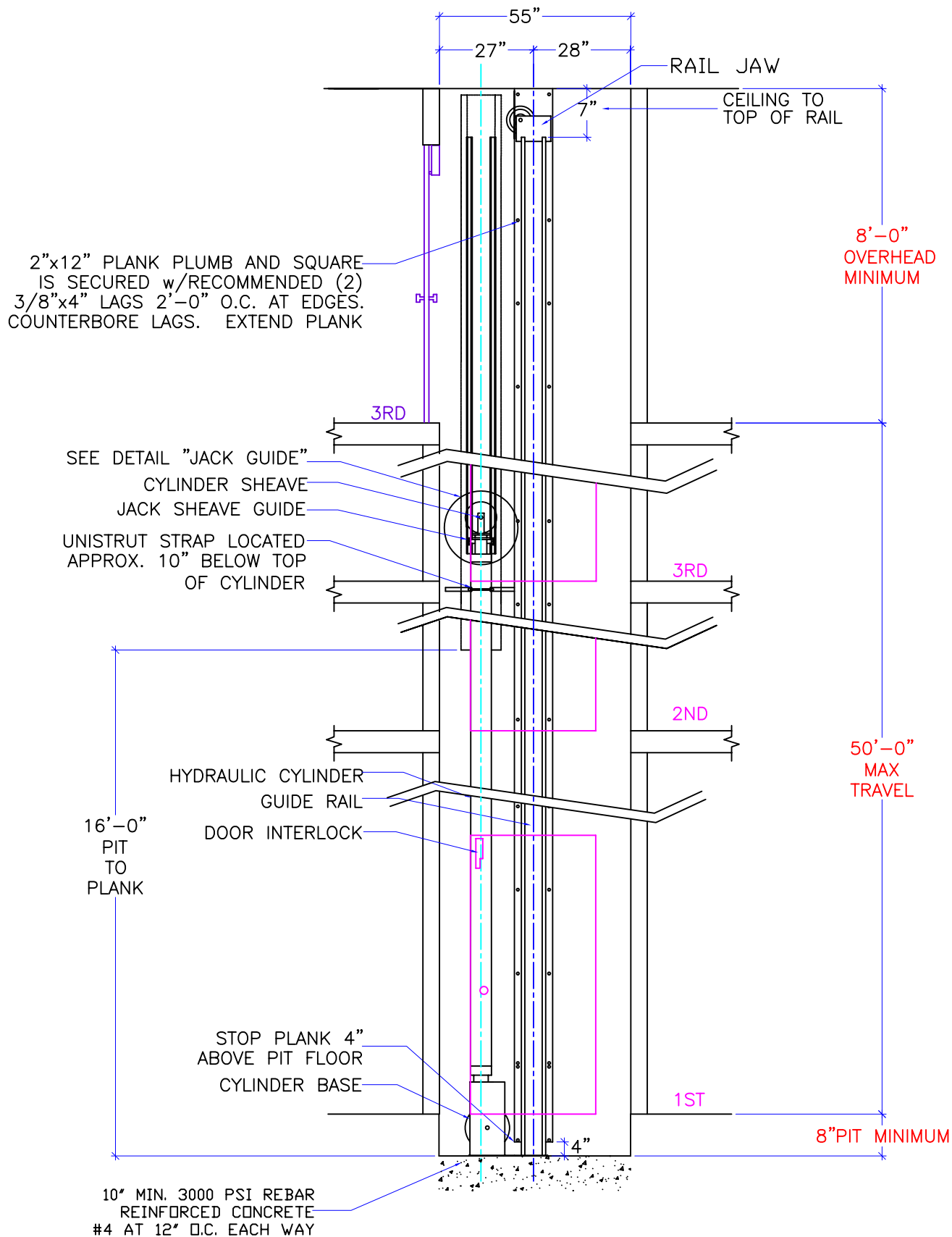
DWG. DATE
02/25/2008

JOB OR APP.#
-

DEALER P.O.#
-

DWG. SCALE
1:24

REV.LEVEL(1-3)
-



DWG VIEW

SECTION A-A

PART NUMBER

80205325

REV.DATE

—

—

—

INCLINATOR
COMPANY OF AMERICA
HARRISBURG, PA

DRAWING TITLE

TYPICAL #950 HYDRAULIC

DRAWING NO.

XXXX

PAGE:
3/5

DRAWN BY:
J.PETTYJOHN

DWG. DATE
02/25/2008

JOB OR APP.#
—

DEALER P.O.#
—

DWG. SCALE
1:24

REV.LEVEL(1-3)
—

MACHINE ROOM
ACCESS DOOR,
LATCH AND LOCK
FIELD LOCATE

MACHINE ROOM
LIGHT

120v. 20 AMP SERVICE
OUTLET w. G.F.I. BY OTHERS

CLEAR AREA
SEE NOTE

3'
3'-6"
MIN.

LANDING CONTROLLER
(18"Wx6 1/2"Dx24"H) FIELD
LOCATE TO MEET N.E.C.
AND/OR LOCAL CODES

FIELD LOCATE
HYDRAULIC PUMP
(16"Wx24"Dx33 1/2"H)

2'-6"

PHONE SERVICE BY OTHERS

3'-10 1/2"
MIN.

120v. LIGHT
DISCONNECT SWITCH

240v. FEEDER LINE: BY G.C.
DISCONNECT SWITCH: BY
ELEVATOR CONTRACTOR

NOTE:
MACHINE ROOM LAYOUT MUST
COMPLY WITH LOCAL, STATE,
AND NATIONAL CODES. REVISE
AS NECESSARY FOR COMPLIANCE
IN YOUR AREA.

NOTE:
MACHINE ROOM TO HAVE NATURAL/
MECHANICAL VENTILATION IF REQUIRED
BY STATES OR LOCAL CODES.

NOTE:
FLOOR TO CEILING
HEIGHT OF 6' 6" AND
□ MEASUREMENTS
REQUIRED BY N.E.C.

DWG VIEW
TYPICAL MACHINE ROOM (MIN. RECOMMENDED SIZE)

PART NUMBER
80205325

REV. DATE

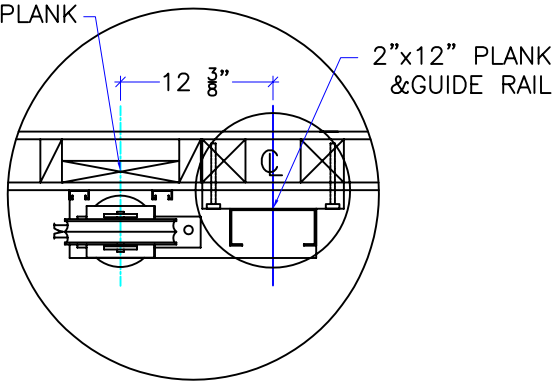
INCLINATOR
COMPANY OF AMERICA
HARRISBURG, PA

DRAWING TITLE
TYPICAL #950 HYDRAULIC

DRAWING NO.
XXXX

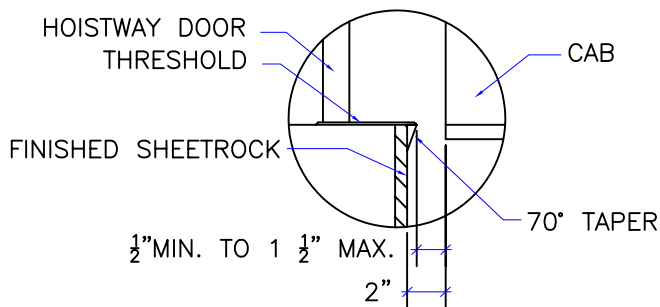
PAGE: 4/5	DRAWN BY: J. PETTYJOHN	DWG. DATE: 02/25/2008	JOB OR APP.#: -	DEALER P.O.#: -	DWG. SCALE: 1:24	REV. LEVEL (1-3): -
--------------	---------------------------	--------------------------	--------------------	--------------------	---------------------	------------------------

FLAT 2"x10" PLANK



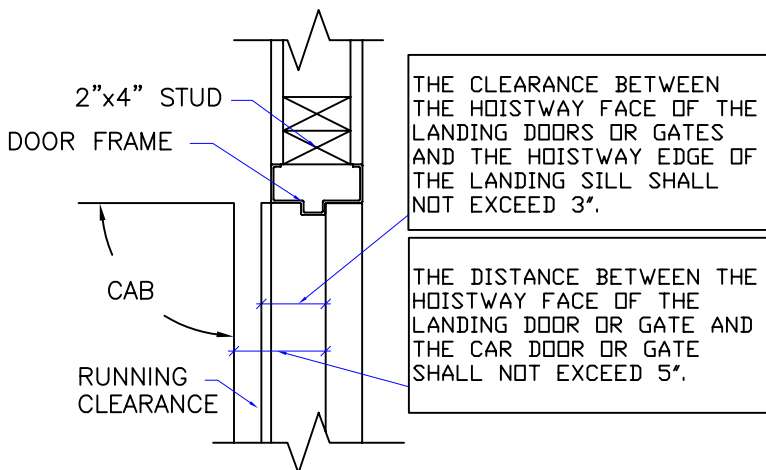
NOTE:
WHEN STUD AND SHEETROCK CONSTRUCTION IS USED ON THE GUIDE RAIL SUPPORT WALL 4"x4" STUDDING IS NEEDED BEHIND THE 2"x12" PLANK.

RAIL DETAIL



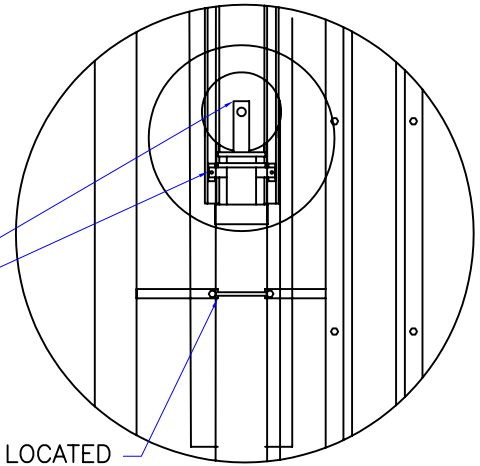
DOOR SILLS TO BE INSTALLED BY G.C. AFTER LIFT SUPPLIER HAS INSTALLED A RUNNING PLATFORM. SILL TO BE BROUGHT OUT TO NOT LESS THAN 1/2" AND NOT MORE THAN 1 1/2" TO THE RUNNING PLATFORM.

SILL DETAIL



DOOR FRAME DETAIL

CYLINDER SHEAVE
JACK SHEAVE GUIDE



NOTE:
JACK SHEAVE GUIDE MUST BE INSTALLED PARALLEL TO MAIN GUIDE RAIL, PLUMB w/ JACK ON INSTALLATION. UNISTRUT TO BE FASTENED TO THE SUPPORT PLANK EVERY 3'-0".

JACK GUIDE DETAIL

1. VERTICAL LOAD FORCES
STATIC = 2,230 LBS.
IMPACT = 4,460 LBS.
2. RAIL FASTENING TO 2"x12" PLANK
#14 x 1 3/4" TYPE A S.M.S. RAIL IS PRE-DRILLED AT FACTORY.
3. BOLT FASTENING OF CAR TO TROLLEY
1/2" - 13 x 4" SOCKET HD CAP SCREWS
4. JACK SPECIFICATIONS
 - A. SINGLE PC JACKS
PISTON DIA. 2 5/16"
WALL THICK. 11/32"
 - B. SPLICED JACKS
PISTON DIA. 2 13/16"
WALL THICK. 9/32"
 - C. ALL CYLINDERS
OUTSIDE DIA. 4"
WALL THICK. 3/16"
 - D. MAX WORKING PRESS. 1000 PSI
5. ALL SHEAVE DIA. 8 5/16"

TECHNICAL DATA

DWG VIEW

DETAILS, DATA, CODES

PART NUMBER

80205325

REV.DATE

-

-

-

DRAWING TITLE

TYPICAL #950 HYDRAULIC

DRAWING NO.

XXXX

PAGE:
5/5

DRAWN BY:
J.PETTYJOHN

DWG. DATE
02/25/2008

JOB OR APP.#
-

DEALER P.O.#
-

DWG. SCALE
1:24

REV.LEVEL(1-3)
-

INCLINATOR
COMPANY OF AMERICA
HARRISBURG, PA