

INCLINATOR
COMPANY OF AMERICA
HARRISBURG, PA

ORDER REFERENCE

PROJECT: TYPICAL - #750
ELEVETTE HYDRAULIC

GENERAL CONTRACTOR: -

EQUIPMENT INSTALLED BY: -

SPECIFICATIONS

MODEL: "HYDRAULIC" DRIVE- 200

LANDINGS: 3

CODE(S): 4

CAPACITY: 750#

SPEED: AT 36 F.P.M.±4

SUSPENSION MEANS: 2 WIRE ROPES 11,700 LBS. TRACTION
STL. STEEL 3/8" x 8 x 19 IWRC

CAR CONSTRUCTION: 3/4" HARDWOOD VENEER

NOTE: ALL MANUFACTURER SUPPLIED CAR AND EQUIPMENT OPTIONS ARE
NOTED ON THE CONFIRMING ORDER SHEET.

DISCLAIMER: ONCE DRAWINGS HAVE BEEN APPROVED,
SIGNED AND WITHIN 5 DAYS OF PRODUCTION, THE
CUSTOMER WILL BEAR ALL RESPONSIBILITY AND
LIABILITY OF FINISHED UNIT.

PLEASE REFER ANY QUESTION TO YOUR
SALES REPRESENTATIVE

☐ APPROVED

☐ UNAPPROVED

SIGNATURE

DATE

DWG VIEW

COVER SHEET

PART NUMBER 80205324

REV.DATE

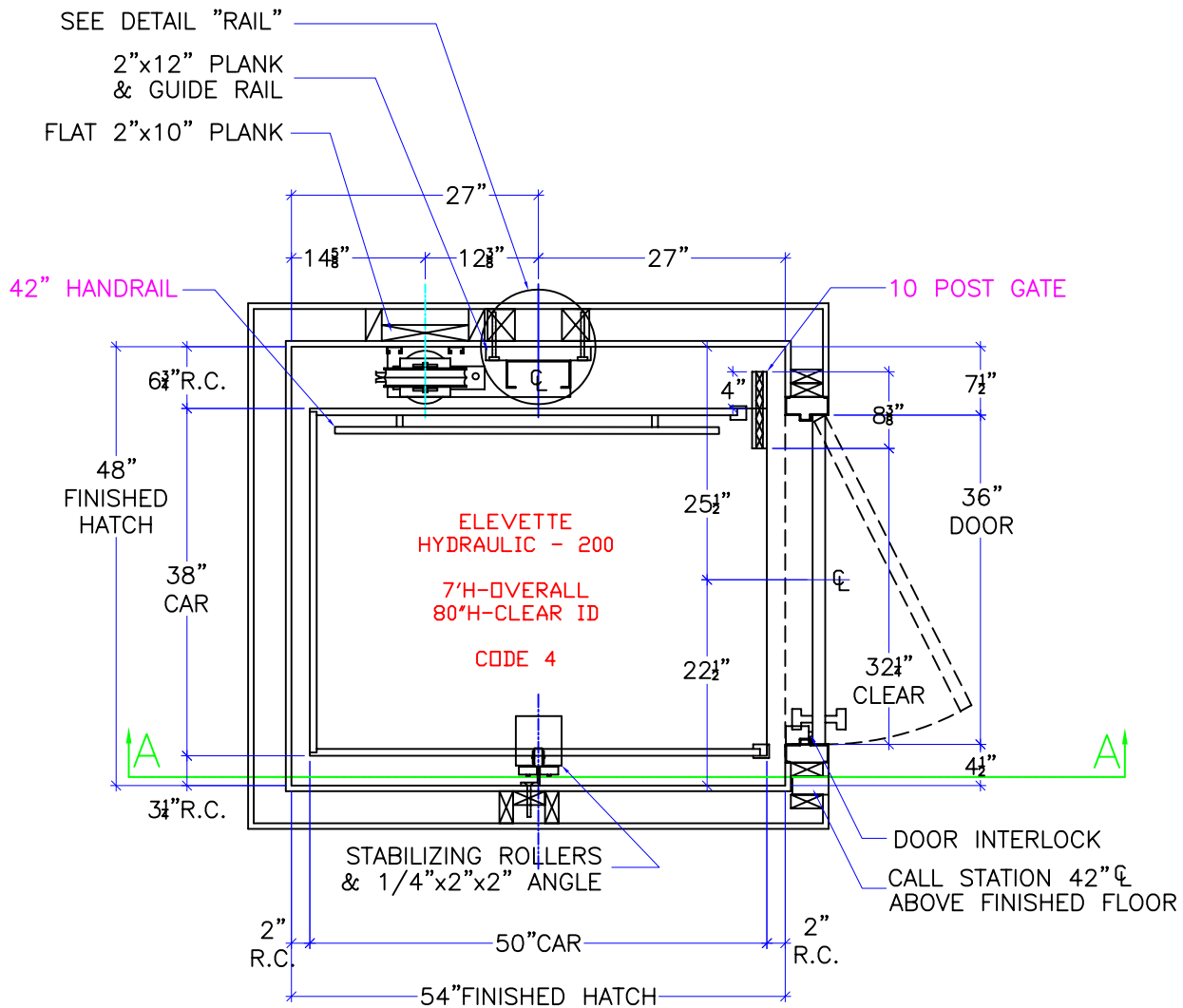


DRAWING TITLE
TYPICAL #750 HYDRAULIC

DRAWING NO. XXXX

-
-
-

PAGE: 1/5	DRAWN BY: J.PETTYJOHN	DWG. DATE 02/25/2008	JOB OR APP.# -	DEALER P.O.# -	DWG. SCALE 1:24	REV.LEVEL(1-3) -
--------------	--------------------------	-------------------------	-------------------	-------------------	--------------------	---------------------



NOTE:

2" RUNNING CLEARANCE MUST BE REDUCED TO 1 1/2" MIN./1 1/2" MAX. AT THE LANDING LEVELS.

NOTE:

ALL HOISTWAY CONSTRUCTION MUST COMPLY WITH NATIONAL, STATE, AND LOCAL CODES. HOISTWAY MUST BE PLUMB AND STRAIGHT FROM TOP TO BOTTOM WITH NO PROJECTIONS INTO THE HOISTWAY.

NOTE:

G.C. TO BUILD OUT HOISTWAY AS NEEDED TO MAINTAIN 3" REQUIRED FOR STABILIZER.

NOTICE TO ELECTRICAL CONTRACTOR:

-ALL ELECTRICAL WIRING MUST BE DONE BY A JOURNEYMAN MECHANIC AND MUST MEET ALL NATIONAL, STATE, AND LOCAL CODES.

-BRING (3) #10 W/GND FROM RESIDENCE INCOMING POWER PANEL 30AMP BREAKER(240V, NEUTRAL, GROUND)TO THE MACHINE ROOM.

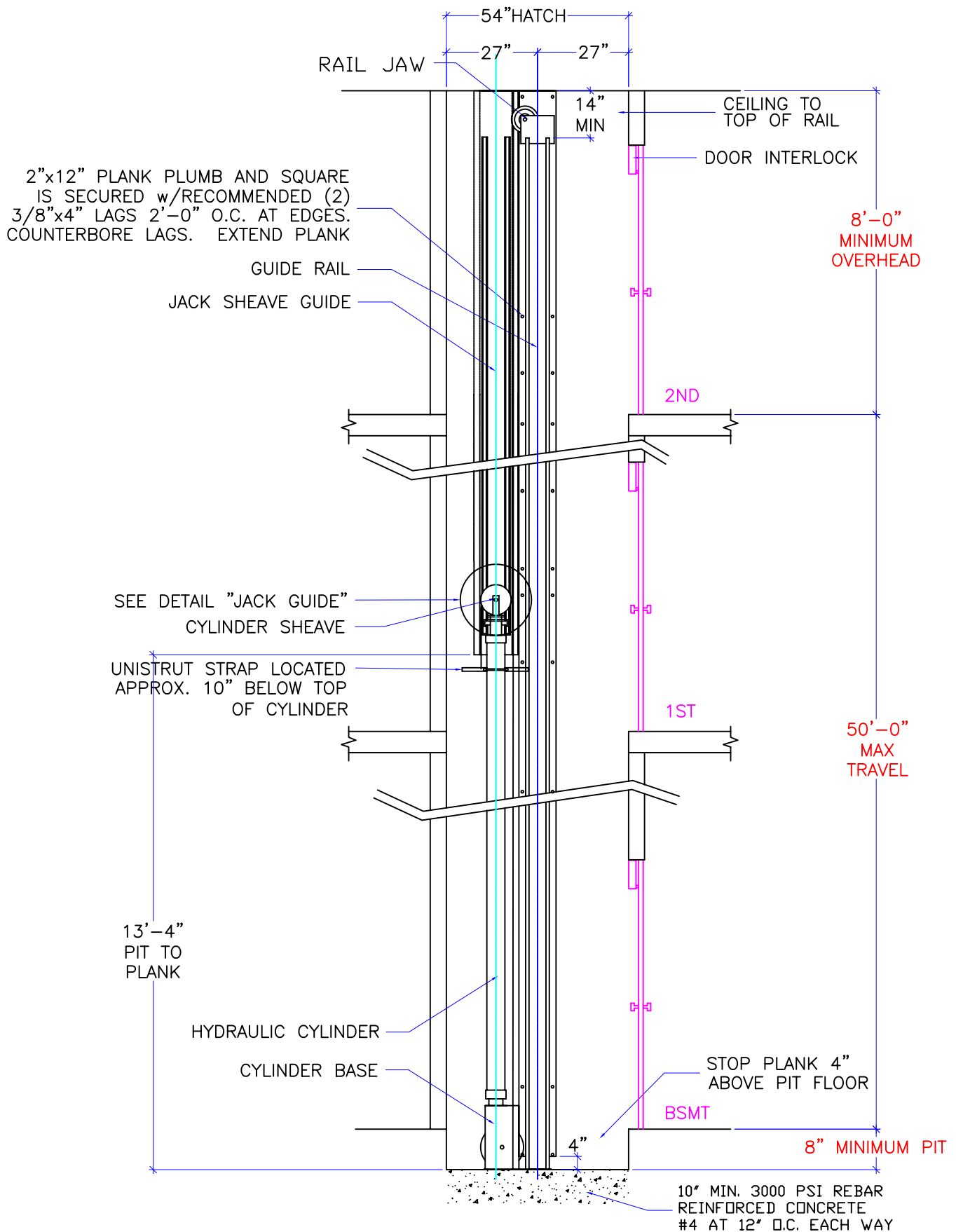
-BRING (2) #12 W/GND FROM RESIDENCE INCOMING POWER PANEL 20AMP GFI BREAKER(120V, NEUTRAL, GROUND)TO THE MACHINE ROOM.

-REQUIRED LOW VOLTAGE WIRING IS SUPPLIED BY MANUFACTURER. ALL EXTENSIONS ADDITIONS, ETC. SHALL BE DONE WITH THE SAME SIZE AND TYPE OF WIRE AS ORIGINALLY SUPPLIED BY THE MANUFACTURER.

-A TELEPHONE LINE SHALL BE SUPPLIED TO THE MACHINE ROOM AND SHALL BE CONNECTED TO A 24 HOUR CENTRAL EXCHANGE.

-ALL MEANS FOR ACCESS TO EQUIPMENT SHALL BE PROVIDED WITH A LOCK. ALL SHAFT DOORS MUST BE INTERLOCKED.

DWG VIEW		PART NUMBER		REV.DATE	
HOISTWAY LAYOUT		80205324		-	
DRAWING TITLE		DRAWING NO.		-	
TYPICAL #750 HYDRAULIC		XXXX		-	
PAGE:	DRAWN BY:	DWG. DATE	JOB OR APP.#	DEALER P.O.#	REV.LEVEL(1-3)
2/5	J.PETTYJOHN	02/25/2008	-	-	-
		1:24			



DWG VIEW

SECTION A-A

PART NUMBER

80205324

REV. DATE

—

—

—

INCLINATOR
COMPANY OF AMERICA
HARRISBURG, PA

DRAWING TITLE

TYPICAL #750 HYDRAULIC

DRAWING NO.

XXXX

PAGE:
3/5

DRAWN BY:
J. PETTYJOHN

DWG. DATE
02/25/2008

JOB OR APP.#
—

DEALER P.O.#
—

DWG. SCALE
1:24

REV. LEVEL (1-3)
—

MACHINE ROOM
ACCESS DOOR,
LATCH AND LOCK
FIELD LOCATE

MACHINE ROOM
LIGHT

120v. 20 AMP SERVICE
OUTLET w. G.F.I. BY OTHERS

CLEAR AREA
SEE NOTE

3'
3'-6"
MIN.

LANDING CONTROLLER
(18"Wx6 1/2"Dx24"H) FIELD
LOCATE TO MEET N.E.C.
AND/OR LOCAL CODES

FIELD LOCATE
HYDRAULIC PUMP
(16"Wx24"Dx33 1/2"H)

PHONE SERVICE BY OTHERS

120v. LIGHT
DISCONNECT SWITCH

240v. FEEDER LINE: BY G.C.
DISCONNECT SWITCH: BY
ELEVATOR CONTRACTOR

2'-6"
3'-10 1/2"
MIN.

NOTE:
MACHINE ROOM LAYOUT MUST
COMPLY WITH LOCAL, STATE,
AND NATIONAL CODES. REVISE
AS NECESSARY FOR COMPLIANCE
IN YOUR AREA.

NOTE:
MACHINE ROOM TO HAVE NATURAL/
MECHANICAL VENTILATION IF REQUIRED
BY STATES OR LOCAL CODES.

NOTE:
FLOOR TO CEILING
HEIGHT OF 6' 6" AND
□ MEASUREMENTS
REQUIRED BY N.E.C.

DWG VIEW
TYPICAL MACHINE ROOM (MIN. RECOMMENDED SIZE)

PART NUMBER
80205324

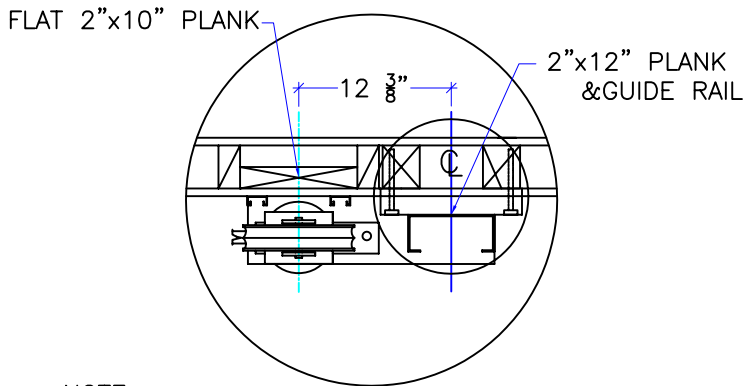
REV. DATE

INCLINATOR
COMPANY OF AMERICA
HARRISBURG, PA

DRAWING TITLE
TYPICAL #750 HYDRAULIC

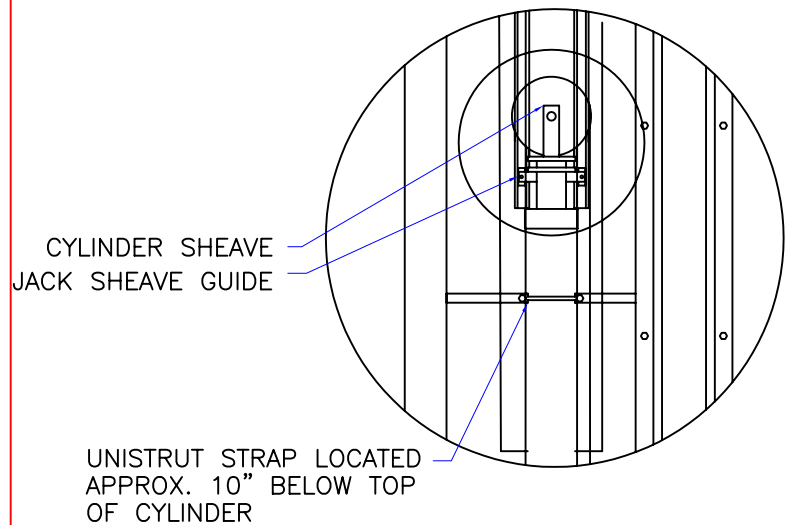
DRAWING NO.
XXXX

PAGE: 4/5	DRAWN BY: J. PETTYJOHN	DWG. DATE 02/25/2008	JOB OR APP.# -	DEALER P.O.# -	DWG. SCALE 1:24	REV. LEVEL (1-3) -
--------------	---------------------------	-------------------------	-------------------	-------------------	--------------------	-----------------------



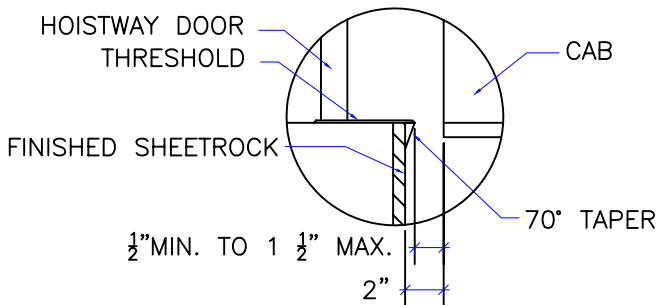
NOTE:
WHEN STUD AND SHEETROCK CONSTRUCTION
IS USED ON THE GUIDE RAIL SUPPORT WALL
(2) 4"x4" STUDDING IS NEEDED BEHIND THE
2"x12" PLANK.

RAIL DETAIL



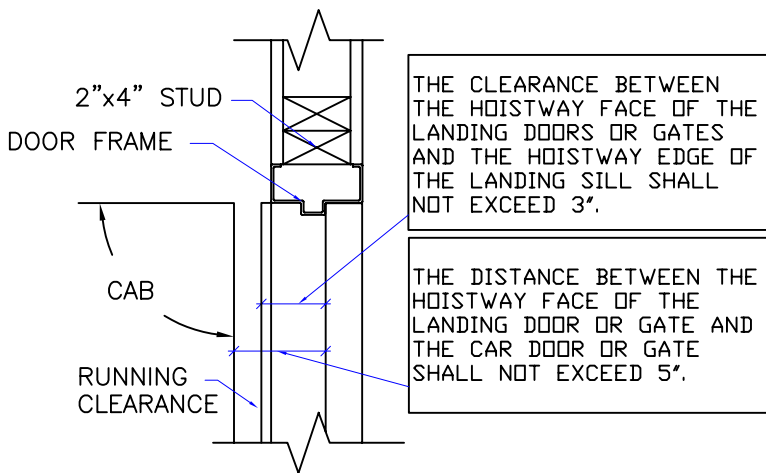
NOTE:
JACK SHEAVE GUIDE MUST BE
INSTALLED PARALLEL TO MAIN
GUIDE RAIL, PLUMB w/ JACK
ON INSTALLATION. UNISTRUT
TO BE FASTENED TO THE SUPPORT
PLANK EVERY 3'-0".

JACK GUIDE DETAIL



DOOR SILLS TO BE INSTALLED BY G.C.
AFTER LIFT SUPPLIER HAS INSTALLED
A RUNNING PLATFORM. SILL TO BE
BROUGHT OUT TO NOT LESS THAN 1/2"
AND NOT MORE THAN 1 1/2" TO THE
RUNNING PLATFORM.

SILL DETAIL



DOOR FRAME DETAIL

1. VERTICAL LOAD FORCES
STATIC = 2,100 LBS.
IMPACT = 4,200 LBS.
2. RAIL FASTENING TO 2"x12" PLANK
#14 x 1 3/4" TYPE A S.M.S. RAIL IS PRE-
DRILLED AT FACTORY.
3. BOLT FASTENING OF CAR TO TROLLEY
1/2" - 13 x 4" SOCKET HD CAP SCREWS
4. JACK SPECIFICATIONS
 - A. SINGLE PC JACKS
PISTON DIA. 2 5/16"
WALL THICK. 11/32"
 - B. SPLICED JACKS
PISTON DIA. 2 13/16"
WALL THICK. 9/32"
 - C. ALL CYLINDERS
OUTSIDE DIA. 4"
WALL THICK. 3/16"
 - D. MAX WORKING PRESS. 1000 PSI
5. ALL SHEAVE DIA. 8 5/16"

TECHNICAL DATA

DWG VIEW

DETAILS, DATA, CODES

PART NUMBER

80205324

REV.DATE

-

-

-

DRAWING TITLE

TYPICAL #750 HYDRAULIC

DRAWING NO.

XXXX

PAGE:
5/5

DRAWN BY:
J.PETTYJOHN

DWG. DATE
02/25/2008

JOB OR APP.#
-

DEALER P.O.#
-

DWG. SCALE
1:24

REV.LEVEL(1-3)
-