

ORDER REFERENCE

PROJECT: TYPICAL HOMEWAITER

GENERAL CONTRACTOR: -

EQUIPMENT INSTALLED BY: -

SPECIFICATIONS

MODEL: HOMEWAITER

LANDINGS: 2

CODE(S): 5

CAPACITY: 120

SPEED: AT 25 F.P.M.±4

SUSPENSION 1 WIRE ROPE:
MEANS: 5/32 AIRCRAFT CABLE

CAR CONSTRUCTION: STANDARD AUTO STEEL

NOTE: ALL MANUFACTURER SUPPLIED CAR AND EQUIPMENT OPTIONS ARE NOTED ON THE CONFIRMING ORDER SHEET.

DISCLAIMER: ONCE DRAWINGS HAVE BEEN APPROVED, SIGNED AND WITHIN 5 DAYS OF PRODUCTION, THE CUSTOMER WILL BEAR ALL RESPONSIBILITY AND LIABILITY OF FINISHED UNIT.

PLEASE REFER ANY QUESTION TO YOUR SALES REPRESENTATIVE

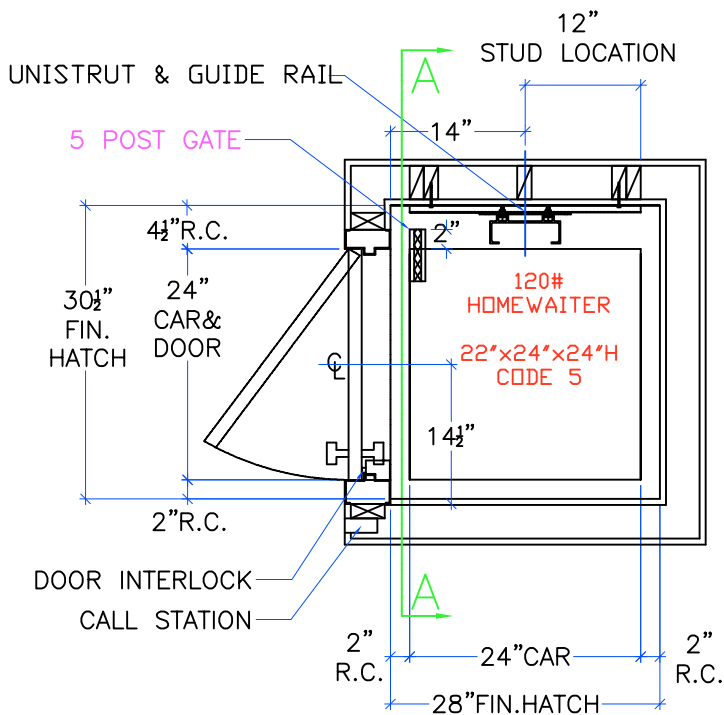
☐ APPROVED

☐ UNAPPROVED

SIGNATURE

DATE

| | | | | | | |
|--------------------|-------------|-------------|--------------|--------------|------------|-----------------|
| DWG VIEW | | PART NUMBER | | | REV. DATE | |
| COVER SHEET | | 80205319 | | | - | |
| DRAWING TITLE | | DRAWING NO. | | | - | |
| TYPICAL HOMEWAITER | | #120 | | | - | |
| PAGE: | DRAWN BY: | DWG. DATE | JOB OR APP.# | DEALER P.O.# | DWG. SCALE | REV. LEVEL(1-3) |
| 1/4 | J.PETTYJOHN | 04/04/2008 | TYPICAL | - | 1:24 | - |



NOTE:
2" RUNNING CLEARANCE
MUST BE REDUCED TO
1 1/2" MIN./1 1/2" MAX.
AT THE LANDING LEVELS.

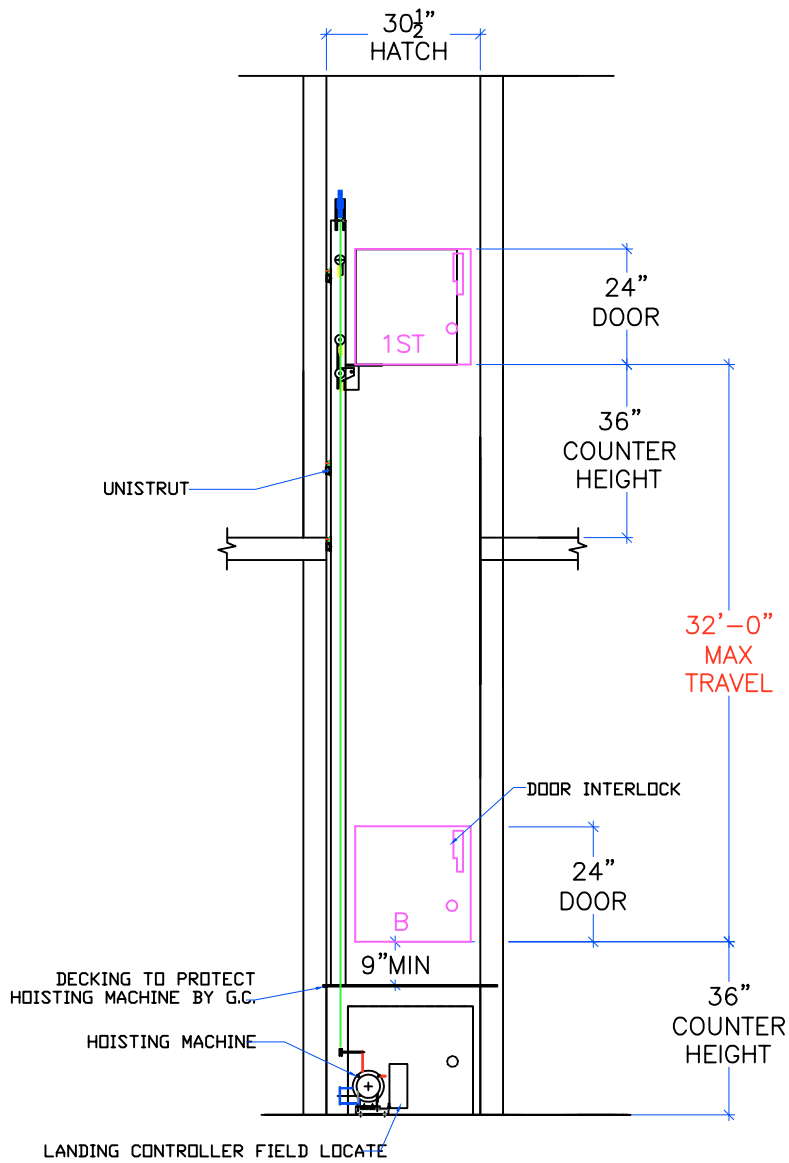
NOTE:
ALL HOISTWAY CONSTRUCTION MUST COMPLY WITH NATIONAL,
STATE, AND LOCAL CODES. HOISTWAY MUST BE PLUMB AND
STRAIGHT FROM TOP TO BOTTOM WITH NO PROJECTIONS INTO
THE HOISTWAY.

NOTE:
G.C. TO BUILD OUT HOISTWAY
AS NEEDED TO MAINTAIN 3"
REQUIRED FOR STABILIZER.

NOTICE TO ELECTRICAL CONTRACTOR:

- ALL ELECTRICAL WIRING MUST BE DONE BY A JOURNEYMAN MECHANIC AND MUST MEET ALL NATIONAL, STATE, AND LOCAL CODES.
- BRING (3) #10 W/GND FROM RESIDENCE INCOMING POWER PANEL 30AMP BREAKER(240V, NEUTRAL, GROUND)TO THE MACHINE ROOM.
- BRING (2) #12 W/GND FROM RESIDENCE INCOMING POWER PANEL 20AMP GFI BREAKER(120V, NEUTRAL, GROUND)TO THE MACHINE ROOM.
- REQUIRED LOW VOLTAGE WIRING IS SUPPLIED BY MANUFACTURER. ALL EXTENSIONS ADDITIONS, ETC. SHALL BE DONE WITH THE SAME SIZE AND TYPE OF WIRE AS ORIGINALLY SUPPLIED BY THE MANUFACTURER.
- A TELEPHONE LINE SHALL BE SUPPLIED TO THE MACHINE ROOM AND SHALL BE CONNECTED TO A 24 HOUR CENTRAL EXCHANGE.
- ALL MEANS FOR ACCESS TO EQUIPMENT SHALL BE PROVIDED WITH A LOCK. ALL SHAFT DOORS MUST BE INTERLOCKED.

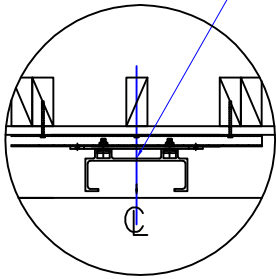
| | | | | | | | |
|--------------------|-------------|------------|--------------|--------------|------------|----------------|--|
| DWG VIEW | | | PART NUMBER | | | REV.DATE | |
| HOISTWAY LAYOUT | | | 80205319 | | | — | |
| DRAWING TITLE | | | DRAWING NO. | | | — | |
| TYPICAL HOMEWAITER | | | #120 | | | — | |
| PAGE: | DRAWN BY: | DWG. DATE | JOB OR APP.# | DEALER P.O.# | DWG. SCALE | REV.LEVEL(1-3) | |
| 2/4 | J.PETTYJOHN | 04/04/2008 | TYPICAL | — | 1:24 | — | |



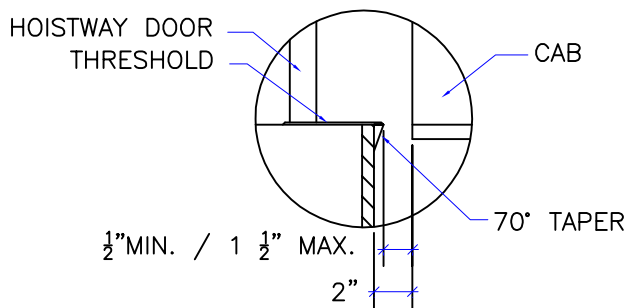
| | | | | | | | |
|-------------------|-------------|------------|--------------|--------------|------------|-----------------|--|
| DWG VIEW | | | | PART NUMBER | | REV. DATE | |
| SECTION A-A | | | | 80205319 | | — | |
| DRAWING TITLE | | | | DRAWING NO. | | — | |
| TYPICAL HOMEWATER | | | | #120 | | — | |
| PAGE: | DRAWN BY: | DWG. DATE | JOB OR APP.# | DEALER P.O.# | DWG. SCALE | REV. LEVEL(1-3) | |
| 3/4 | J.PETTYJOHN | 04/04/2008 | TYPICAL | — | 1:24 | — | |



UNISTRUT & GUIDE RAIL

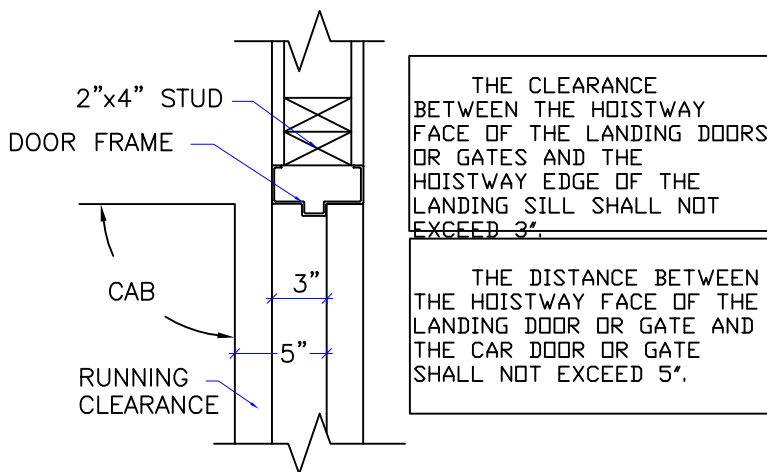


RAIL DETAIL



DOOR SILLS TO BE INSTALLED BY G.C.
AFTER LIFT SUPPLIER HAS INSTALLED
A RUNNING PLATFORM. SILL TO BE
BROUGHT OUT TO NOT LESS THAN 1/2"
AND NOT MORE THAN 1 1/2" TO THE
RUNNING PLATFORM.

SILL DETAIL



DOOR FRAME DETAIL

RAIL FORCES:

78 LBS. PULL OUT
400 LBS. (STATIC) VERTICAL LOAD
800 LBS. (IMPACT) VERTICAL LOAD

REACTIONS ON DIRECTIONAL SHEAVES:

200 LBS. (STATIC)
400 LBS. (IMPACT)

MAXIMUM PULLOUT FORCE ON GEARBOX ANCHOR: 281 LBS.

TECHNICAL DATA

DWG VIEW

DETAILS, DATA, CODES

PART NUMBER

80205319

REV. DATE

—

—

—

DRAWING TITLE

TYPICAL HOMEWATER

DRAWING NO.

#120

PAGE:
4/4

DRAWN BY:
J. PETTYJOHN

DWG. DATE
04/04/2008

JOB OR APP.#
TYPICAL

DEALER P.O.#
—

DWG. SCALE
1:24

REV. LEVEL (1-3)
—