

INCLINATOR  
COMPANY OF AMERICA

HARRISBURG, PA

ORDER REFERENCE

PROJECT: TYPICAL #300 - #500 DUMBWAITER  
WINDING DRUM BELOW

GENERAL CONTRACTOR: -

EQUIPMENT INSTALLED BY: -

SPECIFICATIONS

MODEL: DW-500

LANDINGS: 2

CODE(S): 5

CAPACITY: 500#

SPEED: AT 33 F.P.M.±4

SUSPENSION MEANS: 1 WIRE ROPE 5,700 T.S. IMP.PLOW  
STEEL 1/4" x 8 x 19 WSC

CAR CONSTRUCTION: STANDARD AUTOSTEEL

NOTE: ALL MANUFACTURER SUPPLIED CAR AND EQUIPMENT OPTIONS ARE  
NOTED ON THE CONFIRMING ORDER SHEET.

DISCLAIMER: ONCE DRAWINGS HAVE BEEN APPROVED,  
SIGNED AND WITHIN 5 DAYS OF PRODUCTION, THE  
CUSTOMER WILL BEAR ALL RESPONSIBILITY AND LIABILITY  
OF FINISHED UNIT.

PLEASE REFER ANY QUESTION TO YOUR  
SALES REPRESENTATIVE

☐ APPROVED

☐ UNAPPROVED

\_\_\_\_\_  
SIGNATURE

\_\_\_\_\_  
DATE

DWG VIEW

COVER SHEET

PART NUMBER

80205321

REV.DATE



DRAWING TITLE

#500 DUMBWAITER / MR BELOW

DRAWING NO.

TYPICAL

PAGE:  
1/5

DRAWN BY:  
J.PETTYJOHN

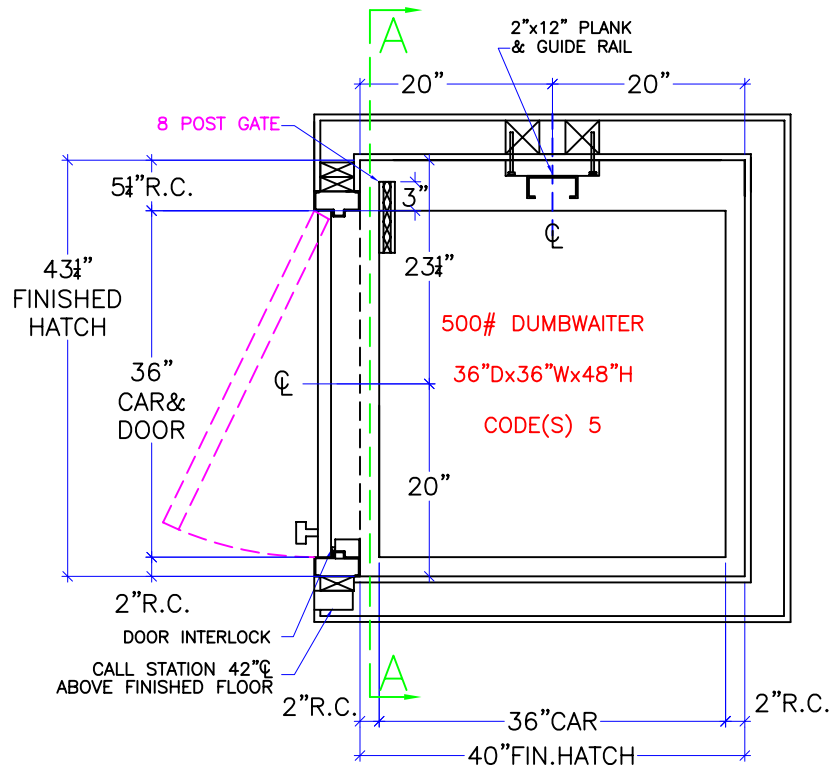
DWG. DATE  
04/07/2008

JOB OR APP.#  
#300-#500

DEALER P.O.#  
-

DWG. SCALE  
1:24

REV.LEVEL(1-3)  
-



NOTE:  
2" RUNNING CLEARANCE  
MUST BE REDUCED TO  
1/2" MIN./1 1/2" MAX.  
AT THE LANDING LEVELS.

NOTE:  
ALL HOISTWAY CONSTRUCTION MUST COMPLY WITH NATIONAL, STATE,  
AND LOCAL  
CODES. HOISTWAY MUST BE PLUMB AND STRAIGHT FROM TOP TO  
BOTTOM WITH NO PROJECTIONS INTO THE HOISTWAY.

NOTE:  
G.C. TO BUILD OUT HOISTWAY  
AS NEEDED TO MAINTAIN 3"  
REQUIRED FOR STABILIZER.

**NOTICE TO ELECTRICAL CONTRACTOR:**

- ALL ELECTRICAL WIRING MUST BE DONE BY A JOURNEYMAN MECHANIC AND MUST MEET ALL NATIONAL, STATE, AND LOCAL CODES.
- BRING (3) #10 W/GND FROM RESIDENCE INCOMING POWER PANEL 30AMP BREAKER(240V, NEUTRAL, GROUND)TO THE MACHINE ROOM.
- BRING (2) #12 W/GND FROM RESIDENCE INCOMING POWER PANEL 20AMP GFI BREAKER(120V, NEUTRAL, GROUND)TO THE MACHINE ROOM.
- REQUIRED LOW VOTAGE WIRING IS SUPPLIED BY MANUFACTURER. ALL EXTENSIONS ADDITIONS, ETC. SHALL BE DONE WITH THE SAME SIZE AND TYPE OF WIRE AS ORIGINALLY SUPPLIED BY THE MANUFACTURER.
- ALL MEANS FOR ACCESS TO EQUIPMENT SHALL BE PROVIDED WITH A LOCK. ALL SHAFT DOORS MUST BE INTERLOCKED.

DWG VIEW

HOISTWAY LAYOUT

PART NUMBER

80205321

REV.DATE

—  
—  
—

**INCLINATOR**  
COMPANY OF AMERICA  
HARRISBURG, PA

DRAWING TITLE

#500 DUMBWAITER / MR BELOW

DRAWING NO.

TYPICAL

PAGE:

2/5

DRAWN BY:

J.PETTYJOHN

DWG. DATE

04/07/2008

JOB OR APP.#

#300-#500

DEALER P.O.#

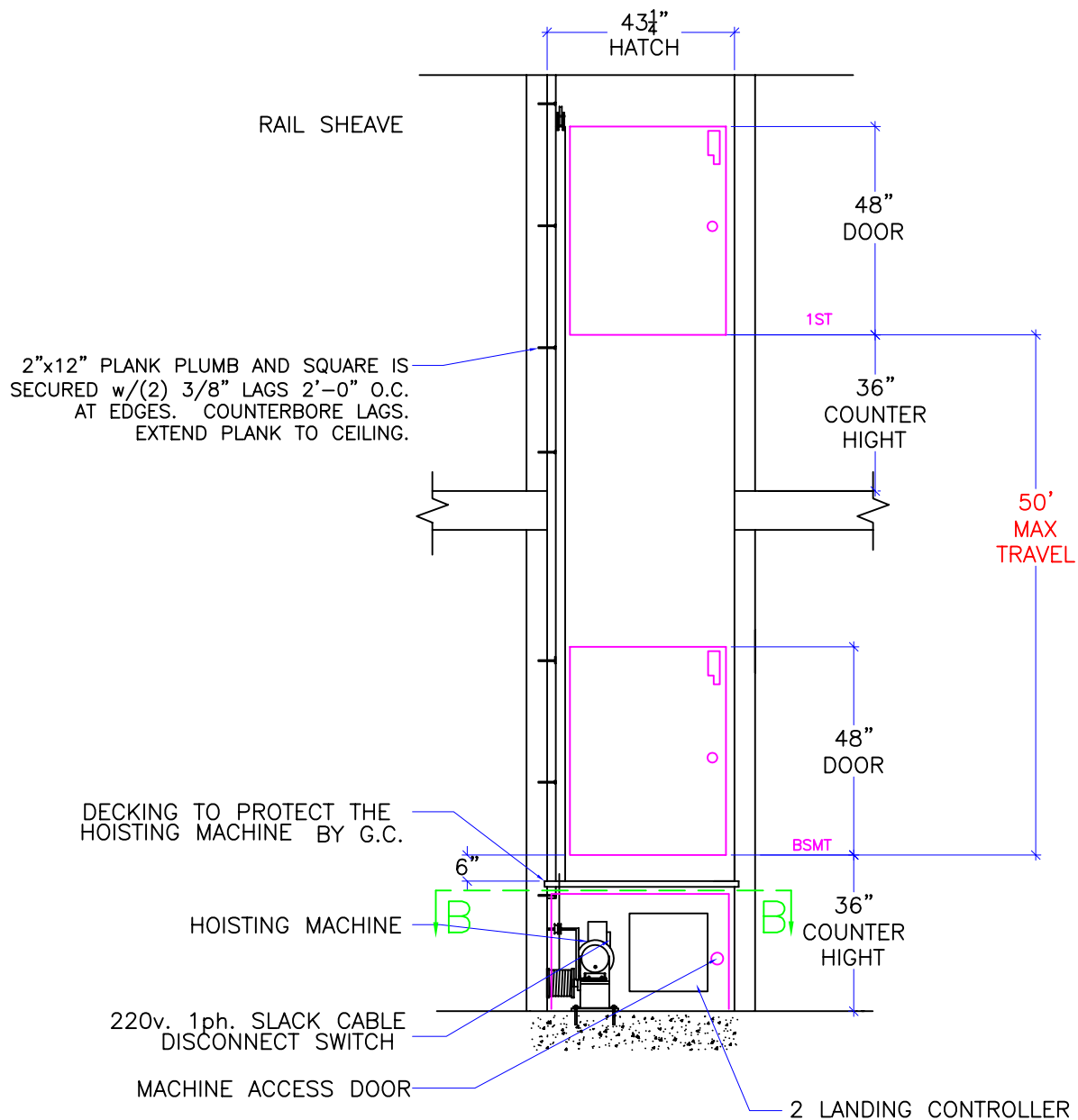
—

DWG. SCALE

1:24

REV.LEVEL(1-3)

—



DWG VIEW

SECTION A-A

PART NUMBER

80205321

REV.DATE

-

-

-

**INCLINATOR**  
COMPANY OF AMERICA  
HARRISBURG, PA

DRAWING TITLE

#500 DUMBWAITER / MR BELOW

DRAWING NO.

TYPICAL

PAGE:  
3/5

DRAWN BY:  
J.PETTYJOHN

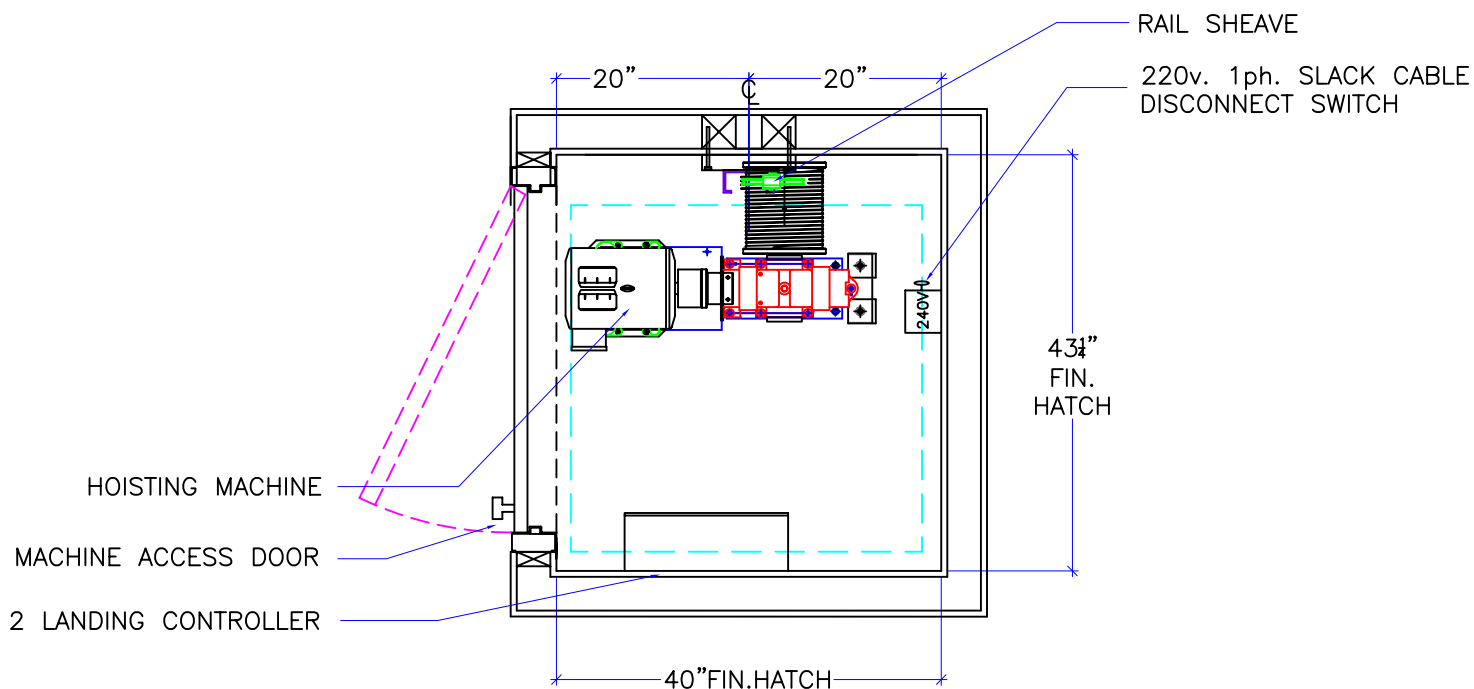
DWG. DATE  
04/07/2008

JOB OR APP.#  
#300-#500

DEALER P.O.#  
-

DWG. SCALE  
1:24

REV.LEVEL(1-3)  
-



DWG VIEW

SECTION B-B : MACHINE ROOM

PART NUMBER

80205321

REV. DATE

-

-

-

**INCLINATOR**  
COMPANY OF AMERICA  
HARRISBURG, PA

DRAWING TITLE

#500 DUMBWAITER / MR BELOW

DRAWING NO.

TYPICAL

PAGE:

4/5

DRAWN BY:

J. PETTYJOHN

DWG. DATE

04/07/2008

JOB OR APP. #

#300-#500

DEALER P.O. #

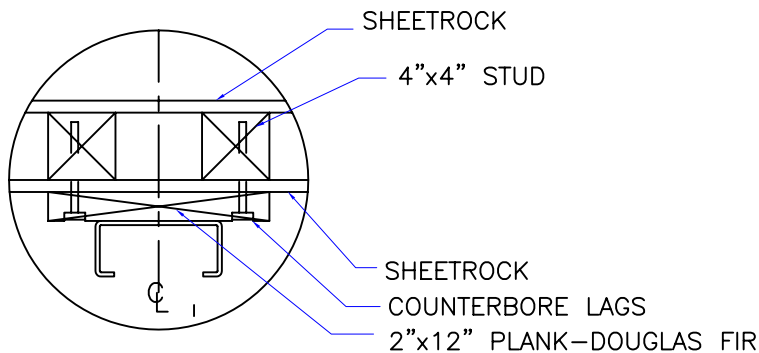
-

DWG. SCALE

1:24

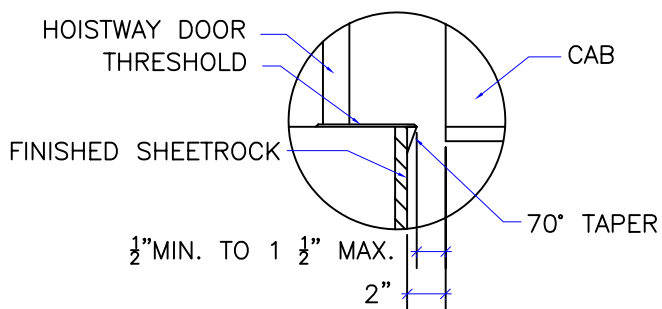
REV. LEVEL (1-3)

-



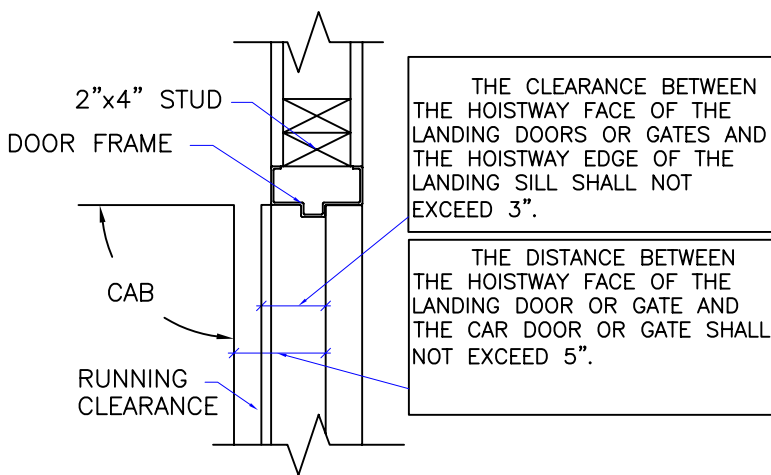
NOTE:  
WHEN STUD AND SHEETROCK CONSTRUCTION  
IS USED ON THE GUIDE RAIL SUPPORT WALL  
4"x4" STUDDING IS NEEDED BEHIND THE  
2"x12" PLANK.

### RAIL DETAIL



DOOR SILLS TO BE INSTALLED BY G.C.  
AFTER LIFT SUPPLIER HAS INSTALLED  
A RUNNING PLATFORM. SILL TO BE  
BROUGHT OUT TO NOT LESS THAN 1/2"  
AND NOT MORE THAN 1 1/2" TO THE  
RUNNING PLATFORM.

### SILL DETAIL



### DOOR FRAME DETAIL

1. REACTIONS ON ALL SHEAVES AND MOUNTINGS  
STATIC = 1,100 LBS.  
IMPACT = 2,200 LBS.
2. RAIL FASTENING TO 2" x 12" PLANK  
#14 x 1 3/4" TYPE A S.M.S. RAIL IS PRE-  
DRILLED AT FACTORY.
3. BOLT FASTENING OF CAR TO TROLLEY  
1/2" - 13 x 4" SOCKET HD CAP SCREWS.

### TECHNICAL DATA

DWG VIEW

DETAILS, DATA, CODES

PART NUMBER

80205321

REV.DATE

-  
-  
-

**INCLINATOR**  
COMPANY OF AMERICA  
HARRISBURG, PA

DRAWING TITLE

#500 DUMBWAITER / MR BELOW

DRAWING NO.

TYPICAL

PAGE:  
5/5

DRAWN BY:  
J.PETTYJOHN

DWG. DATE  
04/07/2008

JOB OR APP.#  
#300-#500

DEALER P.O.#  
-

DWG. SCALE  
1:24

REV.LEVEL(1-3)  
-