


INCLINATOR

COMPANY OF AMERICA



HARRISBURG, PA

ORDER REFERENCE

PROJECT: TYPICAL #200 DUMBWAITER
MACHINE ROOM BELOW

GENERAL CONTRACTOR: -

EQUIPMENT INSTALLED BY: -

SPECIFICATIONS

MODEL: DW-200

LANDINGS: 2

CODE(S): 4

CAPACITY: 200#

SPEED: AT 33 F.P.M.±4

SUSPENSION MEANS: 1 WIRE ROPE 5,600 T.S. TRACTION
STEEL 1/4" x 8 x 19 IWRC

CAR CONSTRUCTION: STANDARD AUTO STEEL

NOTE: ALL MANUFACTURER SUPPLIED CAR AND EQUIPMENT OPTIONS ARE
NOTED ON THE CONFIRMING ORDER SHEET.

DISCLAIMER: ONCE DRAWINGS HAVE BEEN APPROVED,
SIGNED AND WITHIN 5 DAYS OF PRODUCTION, THE
CUSTOMER WILL BEAR ALL RESPONSIBILITY AND
LIABILITY OF FINISHED UNIT.

PLEASE REFER ANY QUESTION TO YOUR
SALES REPRESENTATIVE

☐ APPROVED

☐ UNAPPROVED

SIGNATURE

DATE

DWG VIEW

COVER SHEET

PART NUMBER

80205320

REV.DATE

-

-

-



DRAWING TITLE

#200 DUMBWAITER / MR BELOW

DRAWING NO.

TYPICAL

PAGE:
1/4

DRAWN BY:
J.PETTYJOHN

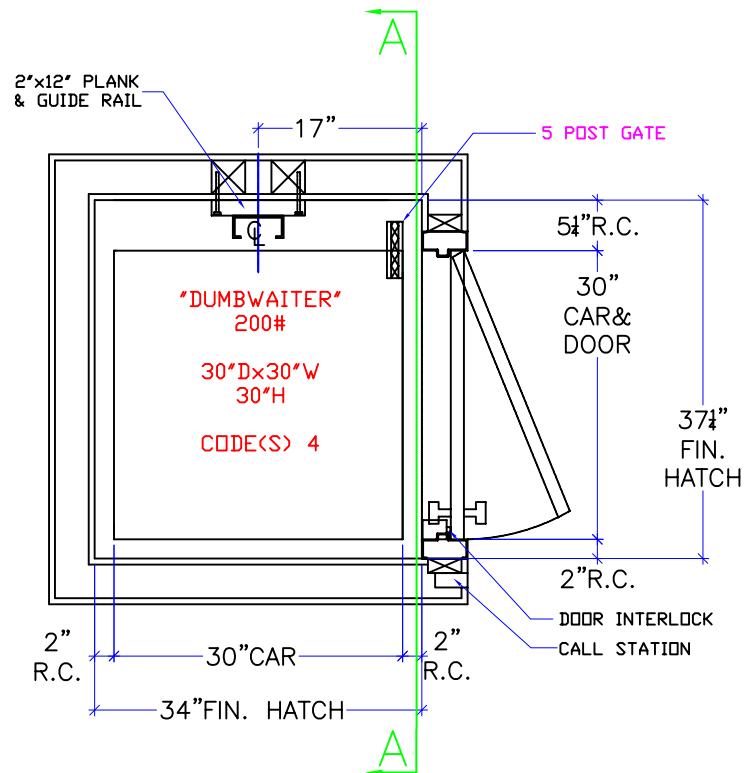
DWG. DATE
04/07/2008

JOB OR APP.#
#200

DEALER P.O.#
-

DWG. SCALE
1:24

REV.LEVEL(1-3)
-



NOTE:
2" RUNNING CLEARANCE
MUST BE REDUCED TO
1/2" MIN./1 1/2" MAX.
AT THE LANDING LEVELS.

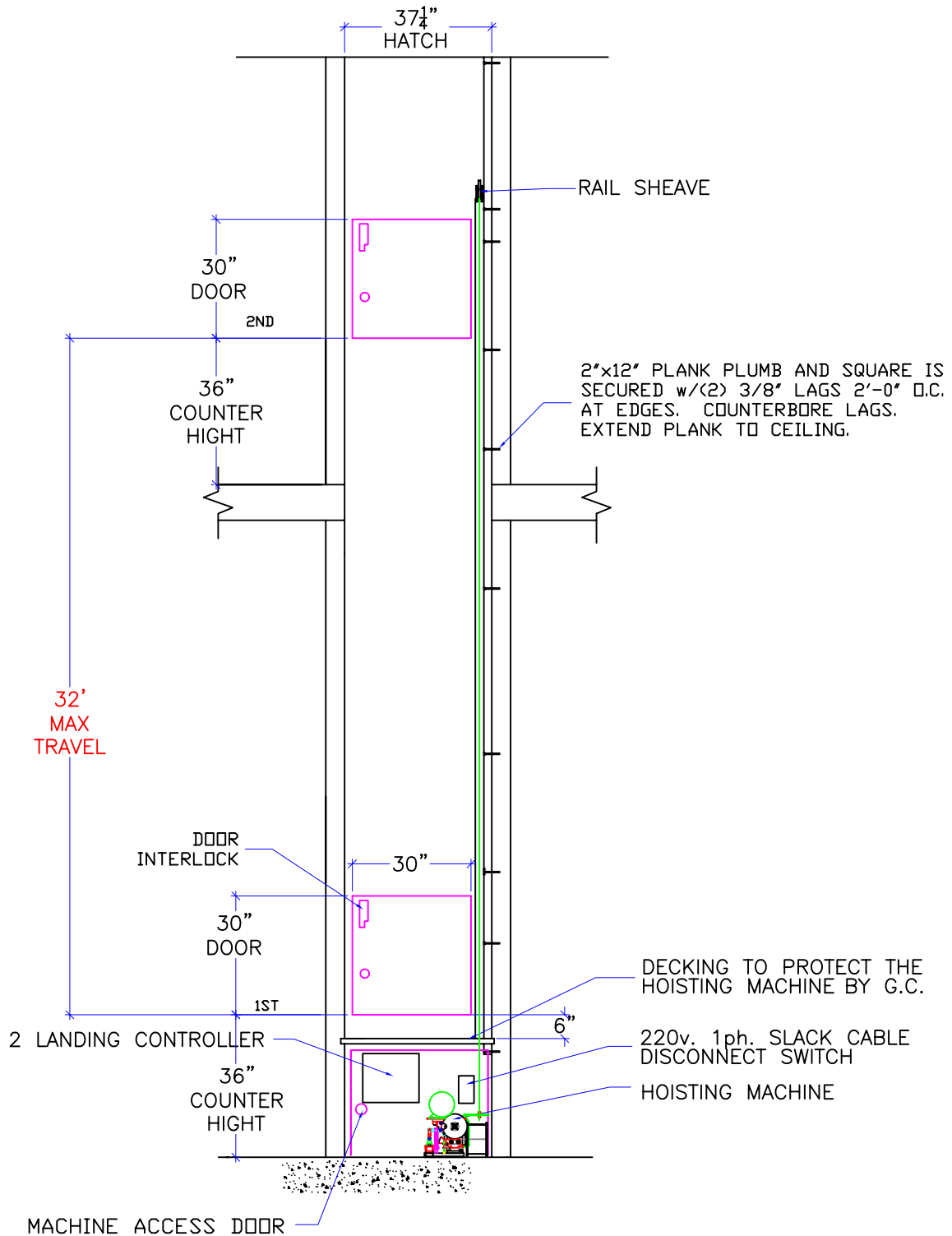
NOTE:
ALL HOISTWAY CONSTRUCTION MUST COMPLY WITH NATIONAL,
STATE, AND LOCAL CODES. HOISTWAY MUST BE PLUMB AND
STRAIGHT FROM TOP TO BOTTOM WITH NO PROJECTIONS INTO
THE HOISTWAY.

NOTE:
G.C. TO BUILD OUT HOISTWAY
AS NEEDED TO MAINTAIN 3"
REQUIRED FOR STABILIZER.

NOTICE TO ELECTRICAL CONTRACTOR:

-ALL ELECTRICAL WIRING MUST BE DONE BY A JOURNEYMAN MECHANIC AND MUST MEET ALL NATIONAL, STATE, AND LOCAL CODES.
-BRING (3) #10 W/GND FROM RESIDENCE INCOMING POWER PANEL 30AMP BREAKER(240V, NEUTRAL, GROUND) TO THE MACHINE ROOM.
-BRING (2) #12 W/GND FROM RESIDENCE INCOMING POWER PANEL 20AMP GFI BREAKER(120V, NEUTRAL, GROUND) TO THE MACHINE ROOM.
-REQUIRED LOW VOTAGE WIRING IS SUPPLIED BY MANUFACTURER. ALL EXTENSIONS ADDITIONS, ETC. SHALL BE DONE WITH THE SAME
SIZE AND TYPE OF WIRE AS ORIGINALLY SUPPLIED BY THE MANUFACTURER.
-A TELEPHONE LINE SHALL BE SUPPLIED TO THE MACHINE ROOM AND SHALL BE CONNECTED TO A 24 HOUR CENTRAL EXCHANGE.
-ALL MEANS FOR ACCESS TO EQUIPMENT SHALL BE PROVIDED WITH A LOCK. ALL SHAFT DOORS MUST BE INTERLOCKED.

DWG VIEW HOISTWAY LAYOUT				PART NUMBER 80205320		REV.DATE — — —	
DRAWING TITLE #200 DUMBWAITER / MR BELOW				DRAWING NO. TYPICAL			
PAGE: 2/4	DRAWN BY: J.PETTYJOHN	DWG. DATE 04/07/2008	JOB OR APP.# #200	DEALER P.O.# —	DWG. SCALE 1:24	REV.LEVEL(1-3) —	



DWG VIEW

SECTION A-A

PART NUMBER

80205320

REV.DATE

—

—

—

INCLINATOR
COMPANY OF AMERICA
HARRISBURG, PA

DRAWING TITLE

#200 DUMBWAITER / MR BELOW

DRAWING NO.

TYPICAL

PAGE:
3/4

DRAWN BY:
J.PETTYJOHN

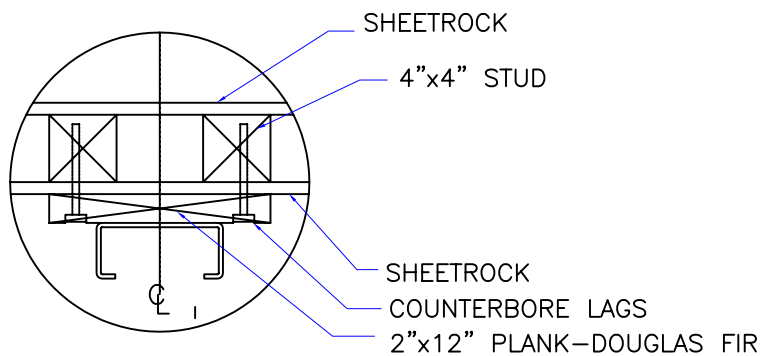
DWG. DATE
04/07/2008

JOB OR APP.#
#200

DEALER P.O.#
—

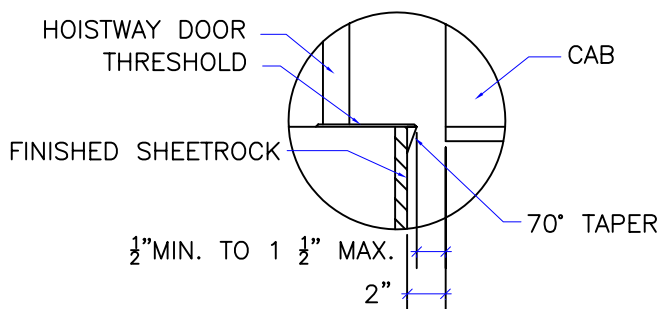
DWG. SCALE
1:24

REV.LEVEL(1-3)
—



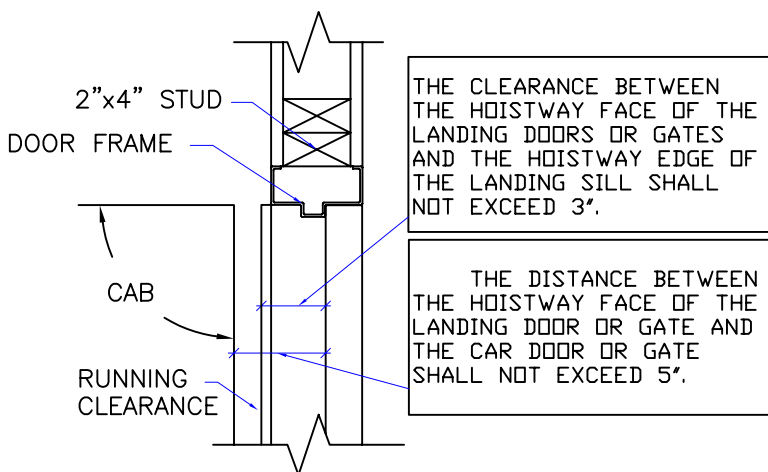
NOTE:
WHEN STUD AND SHEETROCK CONSTRUCTION
IS USED ON THE GUIDE RAIL SUPPORT WALL
4"x4" STUDDING IS NEEDED BEHIND THE
2"x12" PLANK.

RAIL DETAIL



DOOR SILLS TO BE INSTALLED BY G.C.
AFTER LIFT SUPPLIER HAS INSTALLED
A RUNNING PLATFORM. SILL TO BE
BROUGHT OUT TO NOT LESS THAN 1/2"
AND NOT MORE THAN 1 1/2" TO THE
RUNNING PLATFORM.

SILL DETAIL



DOOR FRAME DETAIL

1. REACTIONS ON ALL SHEAVES AND MOUNTINGS
STATIC = 1,100 LBS.
IMPACT = 2,200 LBS.
2. RAIL FASTENING TO 2" x 12" PLANK
#14 x 1 3/4" TYPE A S.M.S. RAIL IS PRE-
DRILLED AT FACTORY.
3. BOLT FASTENING OF CAR TO TROLLEY
1/2" - 13 x 4" SOCKET HD CAP SCREWS.

TECHNICAL DATA

DWG VIEW

DETAILS, DATA, CODES

PART NUMBER

80205320

REV.DATE

-
-
-

INCLINATOR
COMPANY OF AMERICA
HARRISBURG, PA

DRAWING TITLE

#200 DUMBWAITER / MR BELOW

DRAWING NO.

TYPICAL

PAGE:
4/4

DRAWN BY:
J.PETTYJOHN

DWG. DATE
04/07/2008

JOB OR APP.#
#200

DEALER P.O.#
-

DWG. SCALE
1:24

REV.LEVEL(1-3)
-